

Standard: Why did the board request building funds last December? (Continued on page six)

Work Started on Dormitory Addition at St. Louis School

A "bedroom-type" dormitory addition that is not expansion is presently in the digging and concrete-pouring stages at St. Louis School for Exceptional Boys.

"This is not really an expansion," explains Fr. Louis Frangli, director of the school. "This is completion of the school as it was originally planned. The rest of the school was ready in 1951, but we had to wait until now to have the money for this."

The new structure, scheduled for completion in spring of 1975, will improve immensely upon the dormitory situation at the school, Fr. Louis reports. Currently the 60 boys sleep in a pair of large rooms, one for older boys and the other for youngsters, that are divided only

by the individual's bureaus and beds.

The building program will connect a two-story wing to the rear of the school, adjacent to a pond. On each floor will be nine bedrooms, each designed to accommodate five boys, to create "a more family atmosphere," according to Father Louis.

The addition will also provide for attendant rooms, guest rooms, and a clinic room. The upper floor will boast a small chapel and a multi-purpose room, which can be divided into two small meeting rooms or used undivided for large gatherings.

The structure, which is expected to cost \$610,000, is being built by St. Cyr & Associates of Livonia, the same firm responsible for the original school building. Joseph St. Cyr, architect, who is quoted in St. Louis school's 10th anniversary booklet as declaring, "This is my first school for exceptional boys; I want it to be one of the best," apparently succeeded in his aim, as the school in 1961 received a second-place award for the excellence of its architectural design from among schools across the country.

Funding for this building program comes largely from the Servants of Charity, Inc., the order which Fr. Louis and the three other fathers at the school, Fr. Fortunato Turrati, Fr. Germano Pegoraro, and Fr. Umberto Mellare, belong

and which sponsors the school. Fr. Louis notes, however, that donations to the building program would be accepted.

Construction of these new bedrooms, while providing space for some 30 additional boys, is planned primarily to free areas of the school for more appropriate use.

"You see these pool tables and games here in the lobby," Fr. Louis says, with a gesture that encompasses all the games amid flowers and displays and lounge chairs that fill—but not clutter—the entrance area. "When the bedrooms are finished, then we can divide up the big dormitory rooms into playrooms, and put these things there."

The present chapel will also be altered to become a pair of classrooms, Fr. Louis says, thereby providing educational space for the additional 30 boys who can be admitted to the school.

"And in the future . . . oh, we think about a swimming pool, someday, but that is far away," Fr. Louis says. "And I would like to see carpeting here in the lobby," he adds, again with the encompassing gesture.

"But these bedrooms will complete our school as it was planned," Fr. Louis says. "Everything is here for the boys—all within these walls and within the grounds. Everything is here."

Area Students Will Graduate Sunday at MSU

Among 4,874 candidates for degrees to be recognized at spring term commencement exercises at Michigan State University this Sunday, June 9, are two area residents.

Those expected to receive their degrees are Michael A. Serafin, 7625 Seymour Rd., Grass Lake, BA in television and radio, with high honors and Steven Hoy, 14215 Riker Rd., BA in zoology, with high honors.

Telephone Your Club News To 475-1371



GIRLS TRACK SQUAD STARS who were honored at the Chelsea Athletic Banquet for their performances on the first-year team were Sue Frisbie, who was voted most valuable player and led the team in points scored; Kathy Treado, who placed second in point-getting; and Annette Gaken, who placed third in scoring. Other leading track women were Judy Powers, most improved; and Nancy Wonders. These two rated fifth and fourth, respectively, in points compiled.



BULLDOG TRACKMEN who earned honors at Thursday's Chelsea Athletic Banquet were, from left, Mark Burnett, rated most improved, Craig Coltre, most valuable; and Kevin Kelly, also most improved.

Former Chelsea Resident Will Speak at St. Paul Church

The Rev. Douglas Schneider, a Chelsea native, will appear as guest minister at St. Paul United Church of Christ this Sunday, June 9, and later will be the guest of honor at an autograph party in recognition of his recently-published book, "The 'Thank You' House."

The Rev. Schneider's book was published in March of this year and is dedicated to two Chelsea residents, Dorothea and Albert Pielemeier. It is an autobiographical account of the work of the Rev. Schneider and his wife, Karen, while missionaries in India. The author and his wife were engaged in a program that "emphasized the whole person; that is, the social and economic aspects of life are seen as important to a person's over-all self-realization and are not neglected in favor of concentrating merely on one's 'spiritual development'."



REV. DOUGLAS SCHNEIDER

The Rev. Schneider, his wife, and their three children, Benjamin, 11; Kenneth, 9; and Kathleen, 8, served as missionaries in India from 1961 to 1970. The Rev. Schneider, a 1953 graduate of Chelsea High school, was a member of St. Paul United Church of Christ until accepting the pastorate of a church in 1971. He is the son of Mrs. Lewis Schneider.

The Schneiders were employed by the United Church Board for World Ministries of the United Church of Christ, and the Rev. Schneider served as a manager in the Rural Life Program in Orissa, India. The broad nature of the Schneiders' work was a community development. They focused, while raising the number of staff assistants available to them from one to 28, on rice-raising, poultry, bee keeping, and gardening.

The Rev. Schneider describes India as "a wonderful country of wonderful, friendly people who still have the rural mind. In fact, the Industrial Revolution has not even begun for many of them. I saw more happy, hungry people in India than I have happy, well-fed people since my return to the USA," he says.

St. Paul church invites friends, acquaintances, and those interested in the Schneider book to attend the autograph party Sunday.

Girls Softball Summer League Being Organized

A girls summer softball league for girls ages 10 through 15 and sponsored by Chelsea Recreation Council is scheduled to begin the week of June 24.

The league will kick off during that week with softball clinics for all players and their coaches. Once underway, each team will play between eight and 10 games. League rules will guarantee each girl a chance to play in each game.

Games will be played on Tuesdays and Thursday from 4 to 5:30 p.m. at the Beach Middle school diamond. The season will run to Aug. 2.

Registration fee for the league will be \$1 per player.

Pat Clarke, has been named league director, and notes that women are still needed to coach teams. Anyone interested in coaching should contact Recreation Director Tom Balistre at 475-8511.

With nearly 1,550 miles of toll-free expressway, Michigan has one of the best freeway systems in the country.

HAMILTON REFRIGERATION and AIR CONDITIONING SERVICE
COMMERCIAL SYSTEMS Installation and Repair
CALL
GARY HAMILTON
Manchester 428-7600
Evenings 428-8232

CHELSEA HEATING CO.
WARM AIR HEATING - HOT WATER HEATING
AIR CONDITIONING - HUMIDIFIERS
Gas and Oil Service
INTERNATIONAL
COOLING HEATING
Phone 475-2419
Your International Dealer

Full Line Supermarket
BEER - WINE - LIQUOR
AUTHORIZED
FOOD STAMP STORE
LOTTERY TICKETS
MARATHON GAS PUMPS
2-CYCO GAS PUMPS

Jiffy market

Big Enough To Serve You . . . Small Enough To Know You!

Open 7 Days A Week
7 a.m. to 10 p.m.
Corner Sibley & Workner Rds.
PHONE 475-1701

Sale Prices Effective
Thurs. June 6 thru Sun., June 9

TOP VALUE STAMPS - GUARANTEED SATISFACTION - COURTEOUS SERVICE

WAY BAKING CO.

KLEEN-MAID BREAD . . . 3 1 1/4-Lb. Loaves **\$1**

WHAT CAN YOU BUY FOR 5c? ASSORTED

KOOL-AID . . . 5c 1 Pkg. 6.15-Oz. Pkg. Makes 2 Qts.

7-OZ. JAR MARIO'S

SPANISH OLIVES . . . 69c KRAFT REG. LARGE 28-OZ. BOTTLE

BARBECUE SAUCE . . . 39c 1-Lb., 12-Oz. Bottle

MARSHMALLOWS . . . 29c Full Pound

MAXWELL HOUSE, CHAS & SANBORN, HILLS BROS.

COFFEE . . . 98c 1-Lb. Can

BORDEN'S

ICE CREAM SANDWICHES 12 pack 79c

PRINGLE'S NEW FANGLED

POTATO CHIPS . . . 69c Twin Pak 2.9-Oz. Cans

LARGE, NEW CRMP TEXAS

SPANISH ONIONS . . lb. 10c

U. S. FANCY RED

DELICIOUS APPLES . . lb. 29c

FREE TOP VALUE STAMPS

BASKART SPECIAL

CRISPY FLAKE POTATO CHIPS

11-Oz. Bag **49c**

CHARCOAL BRIQUETS

20-Lb. Bag **\$1.29**

BARBECUE TIME

YOUNG, LEAN, MEATY

SPARE RIBS . . . lb. 89c GREAT LAKES CONEY ISLAND BRAND

FRANKS . . . lb. 79c MEADOWDALE

BACON . . . lb. 79c JIFFY HOT PRICE - HOME-MADE

SAUSAGE . . . lb. 79c U. S. CHOICE

RIB STEAKS . . . lb. \$1.29 U. S. CHOICE

CLUB STEAKS . . . lb. \$1.59 WHOLE

PORK BUTTS . . . lb. 59c YOUNG, LEAN, MEATY

PORK STEAKS . . . lb. 69c

FREE TOP VALUE STAMPS

Farm Maid
FARM MAID LO-FAT

MILK \$1.09 gal.

Buy the Best - Buy Farm Maid!

A BEST BUY

FARM MAID 1-LB. CRTN.
COTTAGE CHEESE . . . 59c

FARM MAID PURE
ORANGE JUICE . . 1/2 gal. 59c

FARM MAID DELICIOUS
CHOCOLATE MILK . . qt. 39c

The Real Thing COCA-COLA

8 1 Pint 16-Oz. Bottles Non-Return \$1.19

EQUALS ONE GALLON

JIFFY MARKET MARATHON GAS

Regular Gas **56.9** Premium Gas **59.9**

Prices include all taxes.

FREE TOP VALUE STAMPS

OPEN 7 DAYS A WEEK
MORNING 7 a.m. to 10 p.m. NIGHT

FILL 'ER UP WITH TOP VALUE STAMPS

Track Team Grabs Second in Power-Laden Conference Meet

Chelsea finished its 1974 track season last Wednesday, earning a second place in the Southeastern Conference by placing second in the conference meet.

Favored South Lyon paced the meet with 80 points, followed by the Bulldogs with 70; Dexter, in 3rd, 51; Milan, 4th, 27; Saline 5th,

17; Lincoln, 6th, 14; Brighton, 7th, 8; and Novi, 8th, 5.

Final league standings saw the same top three teams in identical order.

Bulldog trackmen "performed very well in this meet" according to Coach Bert Kruse, but South Lyon performed similarly well and "had the man-power to pull down seven first places, plus they gained some expected points in the long jump which made the over-all task too difficult."

Four meet records were set: Bruce Vail of Dexter set a new mark in the mile, with 4:32.7; Ed Segars of South Lyon set a new 120-yard high hurdle mark of 14.8; and also tied the 180-yard low hurdle mark, running 20.7. Rick Belmont set a new record for the 220-yard dash on the curve, winning in 22.9.

Once again field events were the strong points for Chelsea, as the Bulldogs took three of four events and piled up 25 points for an early lead going into the final evening events.

Ismael Picklesimer repeated this year as shot put champion, win-

ning with a put of 46 ft. 4 1/4 in. Rex Miles pulled down second in this event, with a 45 ft. 3 1/4 in. toss.

Craig Coltre won long jump with a distance of 19 ft. 1 1/2 in., while Don Pierson gained a third in pole vault with a height of 12 ft. 3 in.

In running events, Craig Coltre was second to South Lyon's Segars in both low and high hurdles. Coltre's time in the highs was 15.4, and the low, 21.0, both personal bests.

Karl Gauss was second to Rick Belmont of Milan in both the 100- and 120-yard dashes; his time in the 100-yard dash was 10.6 and his 23.2 in the 220 was also a personal best.

Rick Sweeney took a fifth in the high hurdles with 16.9, while Curt Winans earned a fifth in low hurdles with 21.6, another personal best. Dale Foertner placed fifth in the 100-yard dash with a 10.8.

John Tandy came through with what Coach Kruse termed "a real strong effort" in the 880-yard run, 2:05.6, a personal best, but could manage only a fourth place in a strong field. Howard Salver ran 52.6 in the 440 for fourth place.

John Storey set a new school record in the two-mile run, with a time of 10:31.8, but again could get only a fifth place in another strong field.

The three relay teams, the 880, mile, and 440-yard relays, all ran their best times of the year by wide margins and placed second in all three.

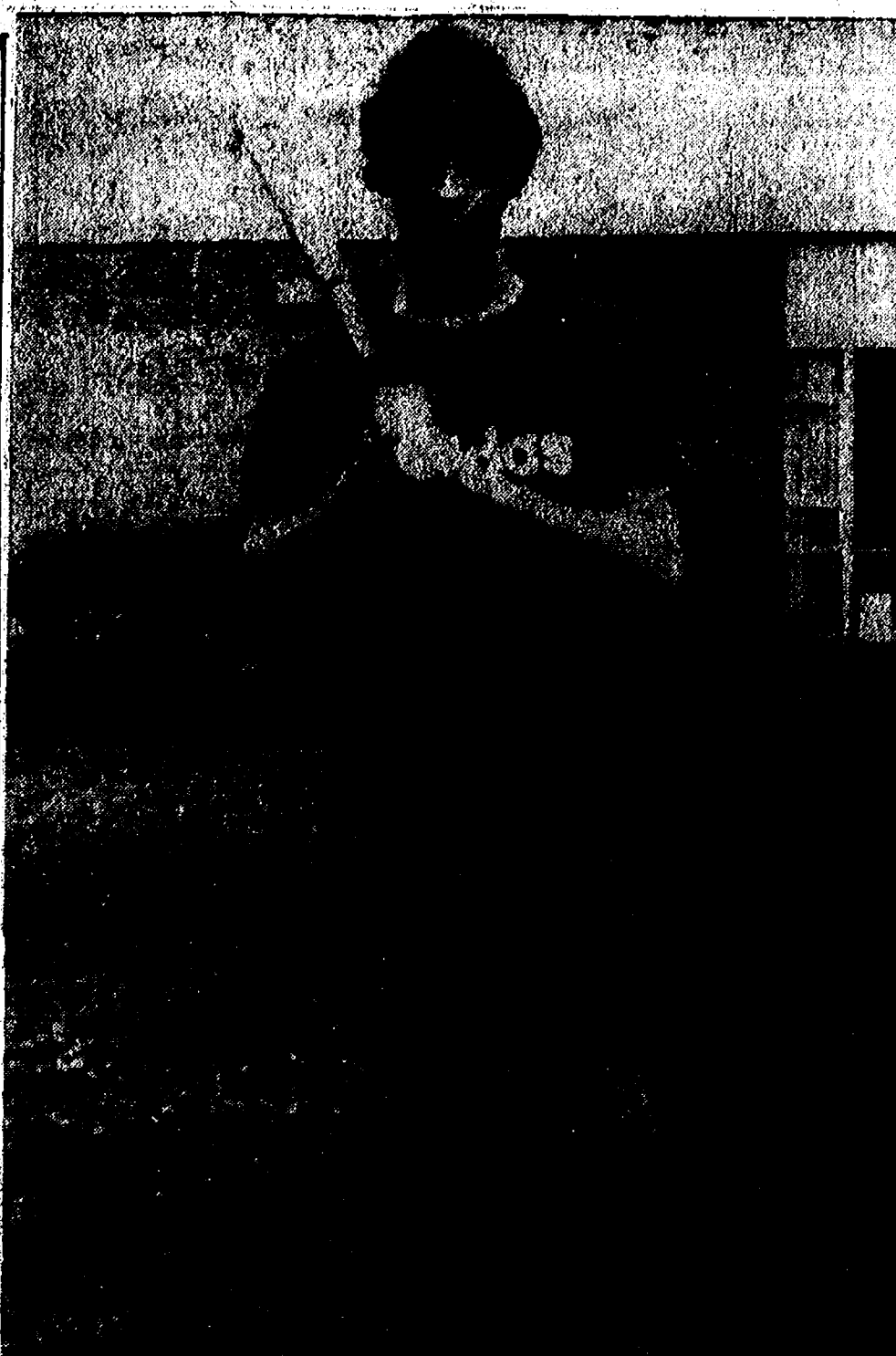
880-yard relay team of Howard Salver, Dale Foertner, Dennis Bauer and Karl Gauss ran 1:34.1, the mile relay squad of Jeff Marshall, John Tandy, Dennis Bauer, and Curt Winans ran 3:36.4, and the 440-yard relay team of Don Pierson, Dale Foertner, Howard Salver, and Craig Coltre ran 4:57.

Bulldog trackmen thus finish the season with a 9-1 dual meet record, having recorded second in the conference, first at the Albion Relays, and second at the Cardinal Relays.

Coach Kruse noted that "during the course of the season, we finished ahead of Niles Brandywine, Mason, and Albion in various relay meets—and these are teams that finished fourth, fifth, and seventh in the state meet—so I feel our athletes have something to feel proud of. We had an excellent season, and hope to be equally as strong or stronger next year."

At last Thursday's awards banquet, Craig Coltre was chosen the most valuable track man. Coltre compiled 177 1/2 points for the season, which was by far more than any other previous Chelsea trackman. Mark Burnett and Kevin Kelly were chosen as most improved.

Four Bulldog trackmen are graduating seniors—Craig Coltre, Jeff Marshall, Dale Foertner, and John Tandy, all of whom "were extremely important to our successful season and will be sorely missed next year," said Coach Kruse.



JOEL SPRAGUE was honored at Chelsea's Athletic Banquet last Thursday as the Bulldog nine's most improved player. Chelsea finished the SEC baseball season with a 7-7 record. Not present for photo was John Houle, who was rated most valuable player on the team.

Theatre Workshop Authorized

(Continued from page one)

DiAnn L'Roy presented her idea to seek a grant for such a workshop to Chelsea Recreation Council last October. Council went on record with its blessing, to the project and the necessary paperwork was submitted to the Michigan Council for the Arts in February, followed by what Miss L'Roy calls "the long wait."

"This workshop is, in a way, a dream come true," she says. "I hope that through this program we can introduce and train youngsters in the performing arts, provide quality entertainment for the community, and stimulate creativity in our aspiring artists."

It is a big job, certainly. The grant itself, however, is not sufficient to support the total program, it must be matched by community funds.

"We are in need of more money, so donations from interested persons will be gratefully accepted," Miss L'Roy reports. Those donating will be honored as patrons in programs for productions. Miss L'Roy also noted that donations are tax deductible. Funds may be

sent to: The Chelsea Players, P.O. Box 82, Chelsea 48118.

"Of course, this program as well as all other summer recreation programs relying upon use of school facilities is dependent upon the operational millage vote on June 10. We urge the citizens of Chelsea to support their youth as they have done in the past."

Telephone Your Club News
To 475-1371

Have Lunch Today
at the
MARK IV LOUNGE
PHONE 475-8141
1198 M-52 CHELSEA

Recreation Softball Gets Off to Fast Start

Thompson's Pizza, Westgate Auto, and Chelsea Milling all turned up winners this week in the opening week of Chelsea Recreation Council fast-pitch softball action.

Thompson's Pizza nudged out the Sweepsters, 4-1, with Clark recording the win. Losing pitcher was Sweepster Bingel.

Westgate Auto pounded Independent pitcher Kemler for 11 runs to win, 11-8. Westgate winning pitcher was Hinz.

It took Chelsea Milling only five innings to trounce St. Paul's, 17-7. Winning pitcher in the contest was Sweet; loser was Kelly.

Fast-pitch teams, originally organized into two separate circuits, have now been consolidated into one 10-team league.

In slow-pitch action, Rulea Farms, Eagles, and IPSCO earned victories to place themselves at the head of the pack.

Rulea Farms nudged out the Independents, 9-7, with Vogel recording the win and Independent Packard suffering the loss.

Eagles notched a quick victory over Fortune Industries, 24-1, in five innings. Recording the victory for the Eagles was Scott, while Fortune's Ackley recorded the defeat.

IPSCO crushed Mark IV Lounge, 10-5, with Phillips on the mound. Losing pitcher was Sanderson.

Recreation schedule for the coming week is as follows:

Monday, June 10—Slow-pitch: Independents vs. Mark IV Lounge, South school field, early; Fortune Industries vs. Village Motor Sales, South school, late; Rulea Farms, vs. Eagles, new high school field, early; IPSCO vs. Chelsea Methodist church, new high school field, late. Fast-pitch: (all games at high school field No. 3); Westgate Auto vs. 3-D Sales, early; Chelsea Milling vs. Dunlavy Farms, late.

Tuesday, June 11—Slow-pitch: IPSCO vs. Walt's Barber Shop, South school, early; McCalla Farms vs. Chrysler, South school, late; Fortune Industries vs. Wolverine Bar, high school field, early; Rulea Farms vs. Mark IV Lounge,

Sweepsters vs. Dunlavy Farms, late.

Thursday, June 13—Slow-pitch: Chrysler vs. Chelsea Methodist church, South school, early; Eagles vs. Wolverine Bar, South school, late; McCalla Farms vs. Village Motor Sales, new high school field, early; Independents vs. Walt's Barber Shop, new high school field, late. Fast-pitch: Westgate Auto vs. Jiffy Mix, early; Chelsea Milling vs. Zion Lutheran, late.

CALL OR STOP IN

CHELSEA GLASS WORKS

WORKMANSHIP AND MATERIALS FULLY GUARANTEED.

Open Daily 8 a.m. to 5 p.m.; Sat. 8 a.m. to 1 p.m.

140 W. Middle, Chelsea

Phone (313) 475-8667

WE REPAIR AND REPLACE:

- ★ STORE FRONTS
- ★ MIRRORS
- ★ FURNITURE TOPS
- ★ PATIO DOORS
- ★ SHOWER DOORS
- ★ TUB ENCLOSURES
- ★ THERMOPANES
- ★ AUTO GLASS - Including Windshields

Free Pick-up and delivery on auto work.

Storm Door & Window Reglazing & Screens

COMMERCIAL BUILDINGS OR RESIDENTIAL

PROMPT SERVICE

REASONABLE PRICES

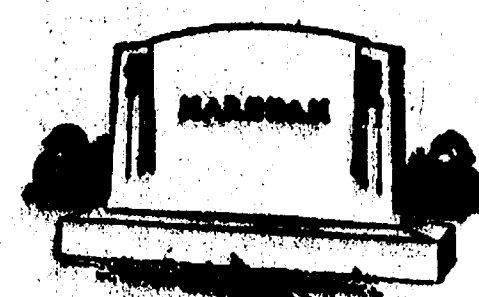
SPRING BOWLING LEAGUES

Open to All Bowlers
STARTING MAY 13

Monday Nites - Men . . . 3-Man Teams
Wednesday Nites - Women . . 4 on a Team
Thursday Nites - Mixed
Tuesday Day League - Women

JR. & SR. HOUSE LEAGUES, NITE OWL LEAGUE
BANQUET MAY 10, 6 p.m. till??

CHELSEA LANES, Inc.
PHONE 475-8141
1189 M-52 CHELSEA



MAUSOLEUMS ★ MONUMENTS
BRONZE TABLETS ★ MARKERS

BECKER MEMORIALS

5033 Jackson Road
ANN ARBOR, MICHIGAN

EXPERT

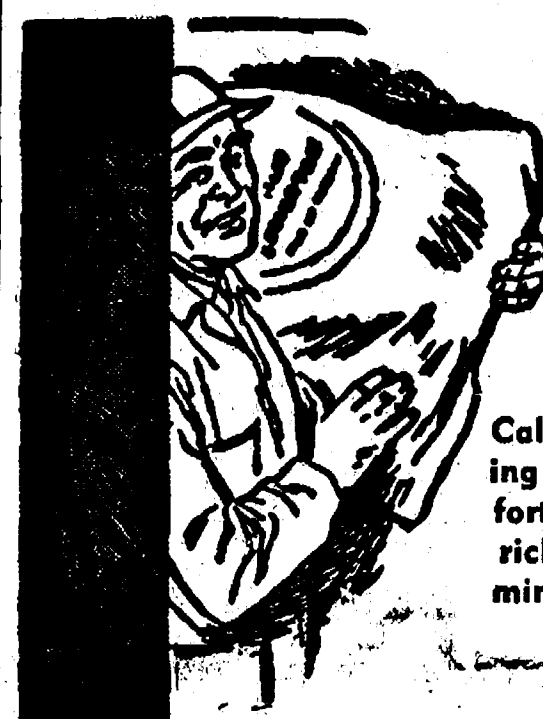
BUMPING and PAINTING

FREE ESTIMATES - ALL MAKES

LLOYD BRIDGES CHEVROLET

475-1373

CHELSEA, MICH.

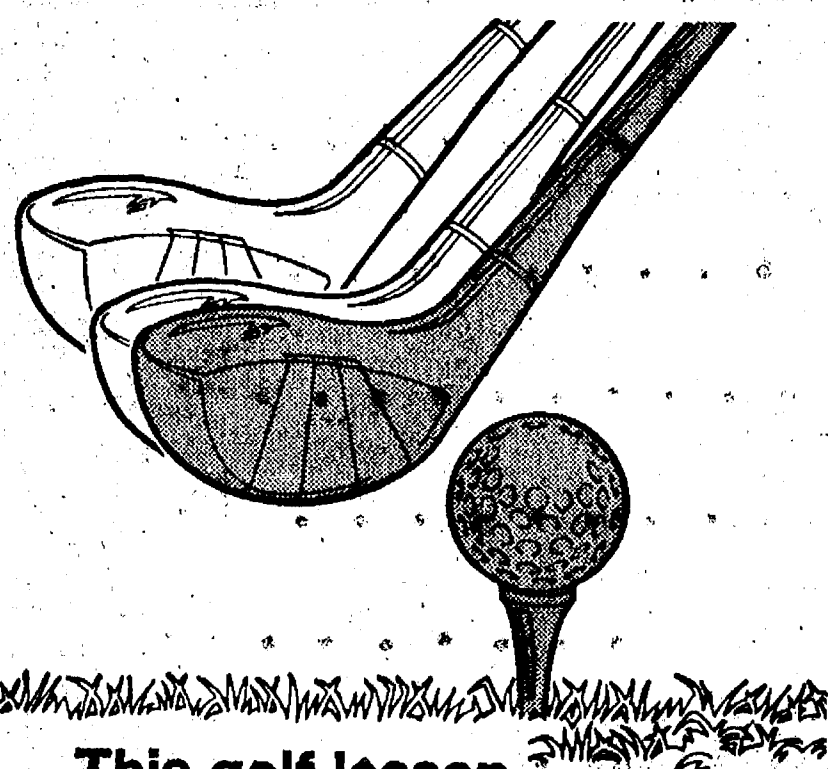


Faster gains
from better
FEEDS

Calves get growing and gaining faster, on our balanced, fortified Calf Feed . . . enriched with needed vitamins, minerals.

Complete feeding rations for all your livestock, poultry.

FARMERS' SUPPLY CO.
PHONE 475-1777



This golf lesson
could save you
thousands

You know, you can holler "Fore!" for dear life, but still be liable if you hit somebody on the links this weekend! In fact, any accident while hunting, boating, fishing, skiing, or any other sports, could put you in court and cost you thousands of dollars! You may not be able to avoid a golf accident... or a lawsuit... but you sure can avoid paying all that money in court. You can protect yourself and members of your family before the first tee with "altogether" personal liability coverage which is available in many Auto-Owners policies.

it's better
altogether

A. D. MAYER AGENCY, INC.

115 PARK ST., CHELSEA
BOB BARLOW, AGENT
PHONE 475-2030



Auto-Owners Insurance
Life • Home • Car • Business

Summer Band

(Continued from page one)

Band director Warren Mayer notes that the program as established is tentative, pending the outcome of Chelsea's operational millage election next Monday.

Schedule for the classes is as follows:

7:30-8:30 a.m.—8th grade band, Monday, Wednesday, and Thursday—All classes meet on these days.
8:45-9:45 a.m.—7th grade band.
10:00-10:45 a.m.—6th grade French Horn, beginner classes.
10:45-11:30 a.m.—6th grade saxophone.

11:30 a.m.-12:15 p.m.—6th grade flute.

1:00-1:45 p.m.—6th grade clarinet and oboe.

1:45-2:30 p.m.—6th grade cornet.

2:30-3:15 p.m.—6th grade trombone.

3:15 p.m.-4:00 p.m.—6th grade percussion.

4:00-4:15 p.m.—Make-up class for those with conflicts.

Ironwood is as far west as St. Louis, Missouri; Port Huron is as far east as Greenville, South Carolina, or Asheville, North Carolina; Hancock is farther north than Montreal, Canada.

YES

WE ARE MAKING
LONG TERM FARM
REAL ESTATE
LOANS

SEE US

Federal LAND BANK
Association

P. O. Box 1006
Ph. 769-2411 5645 Jackson Rd.
Ann Arbor, Mich. 48106

Painting Time is here!



Buy your wife

Dutch Boy NALPLEX

The latex flat wall paint that does the job in one coat that other paints do in two. Made for rollers, Nalplex goes on smoothly without sprays or spatters. Tools and hands come clean with plain soap and water. So easy to use amateurs get real professional results—even your wife. Give her a break—Dutch Boy Nalplex.



MERKEL BROS.
Phone 475-8621

TOWER SHELL

PHONE 475-2691

Open for Your Convenience:

Monday thru Saturday 7 a.m. to 11 p.m.

Sunday 8 a.m. to 11 p.m.

THIS WEEK'S SPECIAL ON MONROE SHOCKS

MONROE-MATIC ea. \$9.85

SUPER DUTY ea. \$12.35

SUPER 500 ea. \$14.25

All above shock absorbers
carry lifetime guarantee.

REG. GAS 57⁹ gal.



Letters to the Editor

To the Editor:

I am writing in regard to the upcoming millage election, or more particularly the defeat of the last two.

For the five years we have been in the Chelsea School District, we have been very pleased with the excellent education without high taxes, and the common sense of the district in providing all-around education without expensive frills and unnecessary expenditure. I thought this kind of management certainly must inspire confidence in the school board on the part of the community. Especially when compared to the extremely high taxes and poor educational environment in some other communities.

It is therefore with some surprise that I see reasonable and equitable millage proposals being defeated. For the love of your children and the community, please continue reasonable education by getting out to vote and voting yes. Don't go through half-day sessions, no music, no sports, no nothing except poor education and discipline problems as many schools have. We saw both extremes, in Howell with poor voter support, and in Ann Arbor with high taxes. Chelsea is proposing a reasonable but up-to-date program. We should not penalize our children, because inflation has affected the cost of their education. We are being offered a great buy.

Jim and Lyleen Haller.

To the Editor:

The citizens of the Chelsea School District can take justifiable pride in the quality of the educational programs provided to the total community. The total community benefits immeasurably from this excellence.

The Board of Education, in my opinion, has been prudent in its operational and budgetary projections. That the board now asks the voters for an increase of 2.52 mills which is a net increase of only one mill through a reduction of Debt Retirement millages is a credit to the board in an honest attempt to be fair both to the taxpayer and to the client.

The issues surrounding this proposal are extremely complex. I have examined these issues from every angle and I am convinced that the proposal to be submitted to the voters on June 10 should be supported enthusiastically. A yes vote is imperative.

Sincerely,
Gorton Riethtiller.

Herbert Pauls Mark 50th Anniversary

Mr. and Mrs. Herbert Paul celebrated their 50th wedding anniversary Sunday with more than 200 guests at St. Paul United Church of Christ. Among the guests were Mr. and Mrs. William Wills, from Evansville, Ind.; Mrs. Wills acted as Mrs. Paul's flower girl in her wedding.

Guests were in attendance from Evansville, Ind.; Fort Wayne, Ind.; Marshall, Detroit, Jackson, Lansing, Ann Arbor, Whitmore Lake, Bunker Hill Clinton, and Grass Lake.

Michigan has a larger variety of commercial tree species than any other state, and its forest product industries contribute almost one billion dollars annually to the Michigan economy.

Telephone Your Club News
To 475-1371

Magic Mirror Beauty Salon

Open Tuesday thru Friday
9 a.m. to 9 p.m.
Saturday, 8 a.m. to 3 p.m.

PHONE 665-0816

LAURA'S BEAUTY SALON

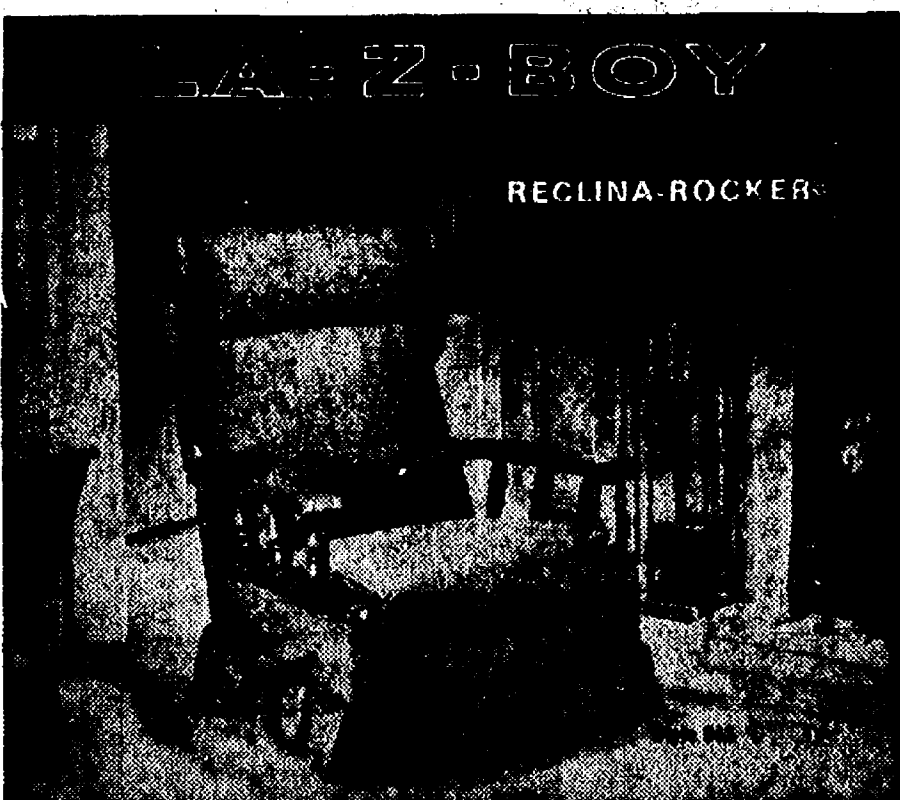
LAURA DOWNER, Owner - Formerly Tina's Beauty Salon
116 S. MAIN ST. PHONE 475-7677

LAURA - TINA - MADELINE - ANGIE - JAN - BOBBI

NEW SUMMER HOURS

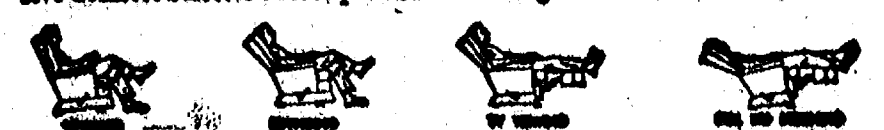
Tuesday thru Saturday 9 a.m. to 5 p.m.
Open Tues. & Thurs. evenings. Closed Monday.

FATHER'S DAY SALE



This chair is destined to be sought after by every member of your family. The generous proportions are enhanced by the brushed dark pine finish of the wood accents. It is fully reclining. It's the rocker that doesn't look like a rocker. La-Z-Boy's exclusive Comfort Selector's three-position

leg-rest can be easily adjusted with or without reclining the chair. This graceful styling is certain to add charm and warmth to your home. A selection can be made from hundreds of attractive decorator colors and fabrics, most of them treated with Scotchgard fabric Protector.



All models and stock at
REDUCED PRICES
now until Father's Day

Merkel Home Furnishings

To the Editor:

We moved to the Chelsea area about one year ago from a small town in the mountains in northeast Pennsylvania. I work in Ann Arbor but chose to locate my family in this area because of the strong endorsement of the Chelsea schools we received from the Bureau of School Services at the University of Michigan.

I was very pleasantly surprised to find that the local schools were as well equipped and staffed as those we left behind—with a property tax rate (school portion) 24 percent lower than we were paying in Pennsylvania.

Our viewpoint depends largely on what we have to compare with, and my wife and I were shocked to see the defeat of the requested school operating millage. The net effect of the requested millage would be an increase in taxes of about fifty cents per week for the owner of a property worth \$50,000.

On June 10 we get another chance to vote our support of the fine educational system in Chelsea. Please, neighbors, get out and vote! If you do not understand why an increase is necessary or why the operating millage is being presented as it is, please call the superintendent's office or any member of the Board of Education.

Please do not stay away from the polls or vote against the operating millage request because you are angry with other manifestations of inflation, or because a neighbor or friend advised you against it, or because of something that offended you in the past.

Contrary to some opinions, the state is not going to bail us out if we refuse to support our local schools. September is not far away. I hope our children can look forward to more years of the high quality of education we are providing here at such low cost, compared to many other places I know of.

Walter F. Hamilton.

To the Editor:

The letter in last week's Standard from E. Kuhl was a sincere effort to express an opinion about the upcoming millage election. However, to imply that a "delayed payment" of our debt retirement would take place is not correct. What is correct is that the new Bursley Bill has changed the school finance picture considerably from what it was a few years ago, and the debt retirement procedure proposed by the board is actually a sound business practice that will help our schools.

We moved to Chelsea almost 10 years ago, when a series of millage defeats had weakened our former school district almost beyond repair, particularly in athletics, music and art. Failure to pass this millage will apparently have an even greater, devastating effect on Chelsea schools in all areas.

The present Board of Education is a good one, in which I have faith. I urge all voters to support them in the millage election on June 10.

Bruce W. Galbraith.

To the Editor:

Some people have been confused in the voting booth by the wording on the school millage ballot.

At the last election the ballot read "... 13.5 mills. . . (10.98 renewal, 2.52 increase)." On next Monday's ballot the references to renewal and increase will be omitted (because they caused confusion) and the only figure on the ballot will be "13.5 mills."

It should be clear to everyone by now that we have voted for approval of 10.98 mills since 1969, that our elected board is saying 2.52 additional mills are needed to hold our own against cost increases, and that the two add up to 13.5.

Subtract from this the 1.52 mills the board will cut from our payments on buildings and you get the

net increase of 1 mill that appears in all the ads and articles. Too bad state law won't permit a full explanation on the ballot! Jim Daniels.

To the Editor:

Be fair to your School Board. One of the most thankless jobs that any civic minded member of the community can acquire is to become a member of the School Board. They run for the board out of a sense of duty to their families and community, certainly not for the pay, \$5 per meeting. And then we, the members of that community, express our thanks by making the job more difficult when we vote down school operating millage requests.

If we were voting against the millage after carefully studying the financial picture of the school and convincing ourselves that the school could be run for less money, then the "no" vote would be justified. We vote in the School Board members to do that careful study for us and let them spend countless hours of their free time, evenings, determining, as our representatives, what are the needs of the school system to provide our children with an education that will prepare them as best we can for life.

We let the School Board members spend their time doing this for us because we are either unwilling or unable to spend the time ourselves. After we have let them spend all of their time in our behalf we then spend 10 minutes of our time to vote "no" from our position of a vast lack of knowledge, understanding, or appreciation for the effort the board members have put forth for us.

I would like to suggest an alternative to voting "no" to operating millages. Get together with your friends, who think less funds are needed to run the schools than have been proposed by the board, and run for School Board yourselves. Then you can spend your evenings working out the budget and the requests for operating millage and we can all be sure that what you ask for is a reasonable figure and all vote "yes."

The members of the School Board are all hard working people who must also pay taxes themselves. Let us show as much confidence in them now, as we did when we elected them to the board by voting "yes" on June 10.

William Chandler.

To the Editor:

Well, Chelsea parents, you have done it again. You have failed to support needed school millage. You have all made your excuses but when you get right down to it, you have been lazy, selfish and contradictory. How do you parents believe you got an education? People paid taxes to give you more than they received in their own academic years. Grandparents, you had tax help to educate children. I paid taxes long before I had children attending school.

I cannot help but believe that if all the new people recently moving into Chelsea to provide their children with a better school environment had voted "yes" that we wouldn't be faced with another election. Possibly you were not nearly as interested in your children as you were with someone else paying for their education.

If you think education is expensive, what do you think is the cost of ADC and Jackson prison? Hopefully, each student graduating from Chelsea will never have need for either but will become self sufficient individuals also helping to finance local programs.

Chelsea is not a perfect school system; improvements need to be made, but "no" votes do not help make these improvements. People attending school board meetings and asking questions of board members do. Use your school board. You are paying for it and yet many do not face the responsibility of directing it. I realize the defeat of the millage these past two elections should be an adequate method of expressing the views of the taxpayers and I would surely agree had the number of votes fairly represented the whole district.

Please consider the repercussions

Wiener Roast To Kick Off Summer Project for Youth



SUSAN ROGERS, a student at Wayne State University majoring in recreation, will direct Chelsea United Methodist Home's summer youth volunteer program this summer, set to begin June 19 with a kick-off wiener roast at the Home.

If this millage is again defeated, the least of which you will pay for is another election before school begins in the fall.

Agnes Hosler.

To the Editor:

I have read the pro and con of the school millage for over two months. Now we, the taxpayer, are getting strong arm tactics from school board before we go to the polls for the third time to express our views.

I am very sure the schools will not have to close their doors if school board had used their God-given gift of common sense instead of sitting on it.

If school board had asked properly for a renewal of the present millage, there would be operating expenses now. Each and every one of us want all children to be given the right of an education.

Who is paying for all these elections since school board has difficulty understanding a "no" vote on an increase of millage. Is the school board depending on the voter, for obvious reasons such as dropping dead, too ill, just don't give a damn anymore, not to make an effort to cast their ballot again!

There are many taxpayers on a fixed income. They don't see any raises in monies for their use. For that matter, a great many taxpayers are having trouble stretching their monies. Everyone is making adjustments, cutbacks on their life style to cope with spiral prices. The school board lacks wisdom, common sense, intelligence for the mockery it has shown of the millage elections. I will vote "no" for any increase in school millage June 10 for many reasons which are obvious.

Glenda Stinnett.

THINK ABOUT IT Jet Spray Carpet Cleaning

Phone John Lixey 761-3025 or 475-1509

YOUR
BANKAMERICARD
ACCEPTED



The Latest in SPRING FASHIONS

featuring

- ★ Personalized Hair Coloring
- ★ Precision Style Cuts

Now Open Mondays

VILLAGE BEAUTY SALON

Arlene - Cheryl - Carol - Janice - Janie

107 N. MAIN, CHELSEA PHONE 475-1671

ART SALE

Saturday and Sunday, June 8-9

11 a.m. to 7 p.m.

1801 E. STADIUM - ANN ARBOR

Original paintings by local artist.
Oil, Watercolor, Acrylic Drawings.

\$2.00 and up



GIFTAMERICA®

© 1974 GIFTAMERICA

CHELSEA CARD & GIFT SHOP

116 S. MAIN ST.

PHONE 475-7501

(Paid advertisement by Citizens for Martin Tobin)

MARTIN H. TOBIN

for

Chelsea Board of Education

PROFILE:

Marty has been a resident of Chelsea for 30 years. He and Janette have three boys in the Chelsea Schools. They own their home in the Village. He is a 1951 graduate of Chelsea High School, and Western Michigan University.

QUALIFICATIONS:

- St. Mary's School Board, Parish Council, School Association—6 years.
- Chelsea Recreation Council—2 years.
- Ann Arbor Co-Op—3 years.
- Tamarack Recreation Co-op—2 years.
- 13 years experience in higher education University of Michigan.

OBJECTIVES:

The best possible education for each dollar expended • An expanded vocational education program and continued high quality college preparation • Maintain and expand communication between the community and the school board • Openly seek suggestions regarding school affairs.

We, the undersigned, plan to support Marty in his bid for a one-year term on the Chelsea Board of Education.

VOTE JUNE 10.

Mr. J. V. Berg

Mr. and Mrs. Robert Bertke

Dr. and Mrs. Richard Borton

Mrs. Leola Brennan

Mr. and Mrs. John Check

Mrs. Patrice Dittmar

Mr. and Mrs. Jack Dunn

Mr. and Mrs. Thomas Eiselo

Mr. and Mrs. Dan Ewald

Mr. and Mrs. Curtis Farley

Mrs. Margie German

Mr. George Heydlauff

Mr. and Mrs. Robert Hodder

Mrs. Colleen Houle

Mr. and Mrs. Phil Hume

Mr. Loren Keexer

Mr. Leslie Kelemen

Mr. and Mrs. Richard Kern

Mr. and Mrs. John Keusch

Mrs. Barbara Krichbaum

Dr. and Mrs. Wilfred Lane

Mr. and Mrs. Merle Leach

Mr. and Mrs. Harvey Lixey

Mrs. Mary Ann Merkel

Mr. Robert Merkel

Mr. and Mrs. Dave Murphy

Mr. and Mrs. Arden Musbach

Mrs. Margaret O'Dell

Mrs. Donna Palmer

Dr. and Mrs. Michael Papo

Mr. and Mrs. Hal Pennington

Mrs. Eva Policht

Mr. and Mrs. William Rademacher

Mr. and Mrs. Daniel Robbins

Mr. and Mrs. Paul Schaible

Mr. and Mrs. James Schardein

Mr. and Mrs. Donald Schrader

Mr. and Mrs. Mike Sweet

Mr. and Mrs. Grant Thomas

Mrs. Art Vandervoort

Mr. and Mrs. Frederick Weber

Mrs. Dixie Lee Wenk

Community Calendar

North Lake Co-op Nursery is accepting applications for 1974-75 school year for fun-loving 3- and 4-year-olds. Call 475-7031 or 475-7338 for information. adv51

Elizabeth Circle bake sale, Saturday, June 15, 9 a.m. to 12 noon, in front of Foster's Men's Wear on Main St. adv 52

Chelsea VFW Post No. 4076, regular meeting, Wednesday, June 12, 8 p.m., Post Home, 105-B N. Main St. *

Lima Study Group luncheon meeting, Wednesday, June 12, 11:30 a.m. at Bill Knapp's in Ann Arbor. Members may wear sequentennial dress. *

Father's Day pancake breakfast, Sunday, June 16, Chelsea Fair Services Center, sponsored by Boys Scout Troop 465. Donations, \$1.50 adults, \$1 children under 12. adv52

Pap tests are free for all area women, Tuesday mornings, at St. Joseph Mercy Hospital, Ann Arbor. Call American Cancer Society office, 668-8857 for appointment. *

One hot meal a day delivered to the home of elderly or disabled, seven days a week, to people living in the Chelsea area. For information call 475-8014 or 475-2923. *

Chelsea Jaycees annual rummage auction, Saturday, June 29, 1 p.m. For pick-up of usable rummage, call Norm Colby, 475-7321, or Dick Call, 475-2593; or evenings Jerry Kraus, 475-1686, or Mitch Zink, 475-7912. adv4911

Limanears, Thursday, June 6, 12:30 p.m., at the Chelsea United Methodist Home with Neva Pruden as hostess. Pot-luck dinner; rolls, butter and coffee will be furnished. *

Open meeting of Advisory Committee on the Status of Women, first and third Monday of every month, 7:45 p.m., room 117A Washtenaw County Building, corner of Huron and Main, Ann Arbor. *

Senior Citizen Fun Nite every Friday evening at 7:30. *

CHELSEA FINANCE CORP.

\$25 to \$1,500
For Any
Worthwhile Purpose

See or Call
FRANK HILL
at 475-8631

111 PARK STREET
CHELSEA, MICH.

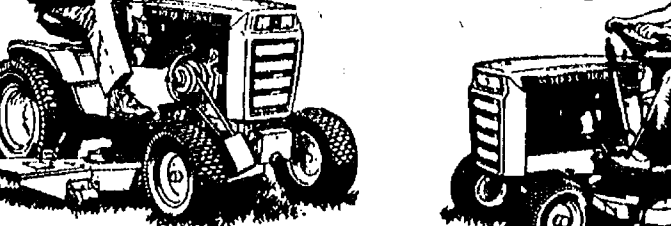
INTRODUCING THE 1974 A, B, C, D SERIES OF TRACTORING-FROM...

WHEEL HORSE

Prices Start at \$825.00



C-160 Automatic
A-800 Ranger



We offer four series of tractors because some people have different size lawns and lots... some have gardens... some do not. So why buy more or less garden tractor than you really need? We're confident you'll find the right lawn and garden tractor among 11 different models for 1974. We'll recommend either an 8, 10, 12, 16, 18 or 19.9 HP tractor that you really need. Come in and let's talk about A, B, C, D's of Tractoring.

GAMBLES

110 N. Main Phone 475-7472

WHEEL HORSE
lawn & garden tractors

DEATHS

Mrs. Emil H. Ellis Former Chelsea Resident Dies in Grand Rapids

Mrs. Enid H. (Pearl) Ellis, 89, died Thursday, May 30, at Oakwood Manor, Grand Rapids.

Born Dec. 2, 1884, in Chelsea, she was the daughter of Harmon and Edith Holmes. She and her husband lived in Grand Rapids all of their married life.

She was preceded in death by her husband and a daughter.

Survivors include one son, H. Holmes Ellis of Grand Rapids, four grandchildren; seven great grandchildren; and two nephews, Howard and Dudley Holmes of Chelsea.

Funeral services were conducted Saturday, June 1, at 11 a.m. at O'Brien-Gerst Chapel, Grand Rapids, by the Rev. Jack Richards, of Ada Congregational church. Burial followed in Woodlawn Cemetery. Arrangements were by O'Brien-Gerst Funeral Home, Grand Rapids.

Louis H. Fahrner Sylvan Township Resident Dies at Chelsea Hospital

Louis H. Fahrner, 76, of 17500 Fahrner Rd., Sylvan township died Tuesday, June 4 at Chelsea Community Hospital.

Born in Sylvan township on July 6, 1897, he was a son of Christian and Elizabeth Heydlauff Fahrner. He was married to Adella Bush on Sept. 9, 1926. She preceded him in death on Nov. 30, 1952. Mr. Fahrner had farmed on the family homestead all of his life.

Surviving is a sister, Mrs. Roy (Clara) Kalmbach of Chelsea, as well as two nephews and several cousins. Cremation has taken place. Arrangements were by the Burghardt Funeral Home.

Senior Awards Presented...

(Continued from page one) science, David Klemmer, and social studies, Jeffrey Sprague.

Earning special homemaking awards were Darlene Robbins, who was presented with the Betty Crocker Family Leader of Tomorrow Award, and Lynne Roskowski, who received the Sterling Silver Award.

Recipient of the Daughters of the American Revolution Good Citizen Award was Deborah Orlowski.

Special speech awards, presented by instructor William Coelius, were earned by second-year students Kathy Stoll, Jane Buxton, and Larry Doll and first-year students Dan Leonard, Jeanne Thornton, Bill Kalmbach, Doug Schrottenboer, Sue Ottomann, Dave Clemens, Craig Johnson, Dale Poertner, and Jan Powers. Varsity debater Dale Koch received the debate award, and David Klemmer earned recognition as the outstanding senior in speech. He also received the Freedom Foundation award.

Juniors who received the American Legion Awards were David Alber and Jodi Daniels.

Recipient of the John Philip Sousa Award for band was Patricia Spencer. Choir Award winner was Patrice Knickerbocker.

Presentation of the Kiwanis scholar-athlete trophy, presented by Athletic Director Lapanowski, was made to David Tucker. Recipients of the Athletic Council Award, presented by Philip Bareis, were Dale Poertner and John Tandy.

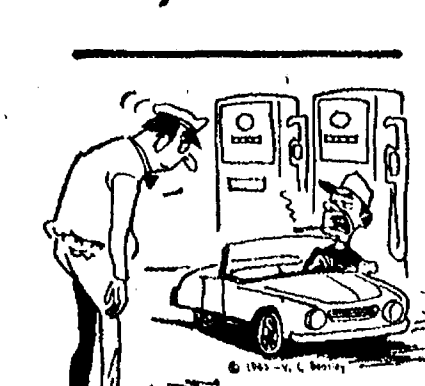
Selected as most representative boy and girl were David Klemmer and Nancy German.

Finally, Jennifer Lane, business manager of Chelsea High school's yearbook, announced the dedication of this year's annual. The book goes to Charles Lane and Mrs. June Winans for their service to the school.

Stand anywhere in Michigan and you are within 85 miles of one of the Great Lakes.

Michigan's land area is larger than Greece and nearly five times the size of Belgium.

Mobil-Toons By GLENN



"Fill 'er up... one full quart."

Whether you want a quart or a tankful, we're always glad to see you!

**GLENN'S
MOBIL SERVICE**

1629 M-52 & I-94
CHELSEA, MICHIGAN
Phone 475-1767
GLENN HEIM
PROP.

Needed School Funds

(Continued from page one) ber when the operating situation is now so desperate?

Cameron: It's really two separate problems. We needed the bond issue to construct necessary new facilities or remodel existing facilities. We cannot use operating funds for construction.

Standard: We've heard that some voters think that the proposed swimming pool is not necessary to the educational program.

Cameron: I'm glad you brought it up. I don't buy the argument that we don't need a pool because everyone can learn to swim in the nearby lakes. It is because of the lakes we need a pool more than many other districts. I hope that expert, supervised instruction can and will cut down on the number of drownings that occur each summer. You might compare the situation to driver's education which helps produce safer drivers. You don't eliminate driver's education because everyone owns a car, do you? In addition, the pool will be available to the entire community.

Standard: Will the increase in millage be used to operate the pool?

Cameron: No. We plan to charge a small fee for groups outside the school system who plan to use the pool. If I may point out one example, the Milan school system gets its operational funds for its pool by charging just such a fee. But remember, the pool and other facilities will not even be operational during the coming school year.

Standard: Let's turn to the 13.5 mills. You have said most of it is in existing taxes.

Cameron: Right. Some 10.98 mill are taxes all of us are currently paying and we are asking that this be renewed for two years. Our total requested millage is 29.2 that's an increase of just 1 mill over the taxes authorized for 1973 or a tax increase of \$1 per \$1,000 of assessed valuation.

Standard: Many people don't understand mills. What's this mean in dollars?

Cameron: If the actual value of your property is \$40,000 the assessed valuation would be one-half of that or \$20,000. The one mill, or \$1 for each \$1,000—is multiplied by 20 so your school taxes would increase by \$20.

Standard: How is that 29.2 broken down?

Cameron: From the county we receive 11.22 mills. Past bond issues account for 4.48 mills. The remainder is the 13.5 mills we are requesting on June 10.

Standard: But 13.5 mills minus the 10.98 renewal leaves 2.52. If 1 mill is additional tax, then what is the 1.52?

Cameron: Bond issues in 1956 and 1965 amounted to a taxable rate of 3 mills. The 1973 bond issue added 3 more mills. Therefore we are authorized a taxable rate of 6 mills as payment on the bonds. The Chelsea School Board is reducing that total to 4.48 which leaves the 1.52 as debt reduction.

Standard: That is quite complex. Could you say it in simpler terms?

Cameron: Last year, in Washtenaw county only Manchester, Milan and Whitmore Lake spent less per pupil on its schools than we did in Chelsea. Not since 1969 have we gone to the voters to ask for more money. Revenues have grown during the last few years because of rising property values. The taxpayers have paid more dollars or higher valuations of their property but the school's percentage has remained the same. We no longer can make ends meet. The board has trimmed the budget to the bone and the one new mill in taxes will simply continue what we have, not add any new programs.

Standard: But with property valuations increasing, why don't higher tax dollars continue to cover the schools' expenses?

Cameron: The income of all school districts in Michigan has been equalized under the new State Aid Act—the so-called Bursley Bill. Regardless of how much the total assessments are raised within a district, the income per student does not increase. What does change is the amount of state aid a district receives. Therefore, to cover expenses the district must increase its own taxes.

Standard: Why not split the proposal, ask for approval of the 10.98 renewal which is existing taxes and ask separate approval for the one mill in new taxes?

Cameron: If the one mill were for new programs your idea could be considered but the increase is needed to meet expected current expenses. Remember, we have no real control over costs such as fuel, electricity, insurance for buildings and the materials needed to run a classroom. We are not changing our program, we are trying to continue it.

Standard: Won't this increased tax cause added problems for senior citizens who are retired and living on a fixed income?

Cameron: Please remember that anyone qualifying for the state's property tax rebate program during this past year will have returned to them any increase in local property taxes up to a maximum of \$500. In other words, most retirees can vote yes and the state will pick up the tab.

Standard: In closing, is there any additional statement you would wish to make?

Cameron: Perhaps the most important idea hasn't been touched on yet. The district's citizens have great pride in the Chelsea schools. We offer a range of training, from courses for the children going on to college to good, solid vocational courses. Our range is broad, reflecting the wide interests and needs in a community such as ours. We maintain a mature discipline among the students that is the envy of schools in nearby cities. What the June 10 election comes down to is a vote for—or against—our children. It is nothing less than that.



FREDERICK W. WAGNER, son of Mr. and Mrs. Frederick J. Wagner, 319 Congdon St., will graduate from the University of Washington with a Ph.D. in Urban and Regional Planning. He has accepted a position as an assistant professor at the Urban Studies Institute, the University of New Orleans, beginning Aug. 1.

Inverness Ladies Golf Winners

Heavy fog turned to sunshine on the golf course at Inverness Country Club May 30 to welcome 28 ladies for the Ladies Day program.

Flight 1 winners for low gross were Jeannette Smith and Evelyn Hunter. Low putt winners were Jeannette Smith, Joe Rabbitt, Dorothy Hale and Evelyn Hunter.

Flight 2 low gross winners were Peg Poertner, Jane Priest, Helen Wilson and Louella Patterson. Dorothy Foster had a no-putt green and captured the prize for low putts in Flight 2.

In Flight 3 Toni Wilson had low gross. Low putts were won by Dorothy Miller, Melbourne Smith and Evelyn Lantis.

Hostesses for the day were Joe Rabbitt and Ellie Reynolds.



A DIAL-A-RIDE SERVICE for election day is discussed by Jaycee President Norm Colby and Robert Daniels, Board of Education member. From 2 p.m. to 8 p.m. on Monday, June 10, Chelsea School District voters may obtain a ride to and from the polls by calling 475-8065.

**CHELSEA JAYCEES
AUCTION RUMMAGE SALE
SATURDAY, JUNE 29**

Beginning at 1 p.m.
CHELSEA FAIRGROUNDS

For Pick-up of Items Call

DICK CAIL 475-2593	MITCH ZINK 475-7912
JERRY KRAUS 475-1686	NORM COLBY 475-7321

EXCLUSIVE! Amana® has the only refrigerator-freezer with the FREEZER ON THE BOTTOM!



stor-
mor®
door

holds packages
upright, exposed
for easy removal

Model BC-20K
20.1 cu. ft. capacity
13.6 cu. ft. refrigerator
6.5 cu. ft. freezer (229 lbs.)

Convenient
Terms

DESIGNED FOR THE WAY YOU USE IT!

It's new, all new, and designed to serve you the way you normally use a refrigerator. The refrigerator is on the top, because you'll probably open it many times more than you will the freezer. You can set the control without affecting the freezer.

The freezer on the bottom has a Stor-Mor® Door for often-used foods, two ice cube trays and a special fast freeze shelf that can convert to an add-it-yourself Automatic Ice Maker.

CONVERTIBLE!
DECORATOR TRIM KIT

As an extra buy option, you may convert this Amana into a Decorator model to match any kitchen color scheme.

**AMANA
5-YEAR WARRANTY**

Amana warrants for 5 years from date of original purchase in U.S. replacement or repair of parts found defective as to workmanship or material under normal use. This includes labor required for replacement of defective parts. Defective parts are to be returned through Amana's dealer-distributor organization. Owner is responsible for serviceman's travel charges, local cartage, replacement of gaskets, rubber or plastic parts and light bulbs. Any product subjected to accident, misuse, negligence, abuse, delamination of serial plate or alteration shall void the warranty. In Canada, the warranty applies as above except that it does not cover taxes, duties, assessments levied at time of export. AMANA REFRIGERATION, INC., AMANA, IOWA

2 Automatic Cold Controls, refrigerator "SENSI-matic" control keeps food at even temperatures, even allows for door openings. Freezer control is up front, maintains pre-set temperature independently of refrigerator. And has a power-saver switch, too!

"Refrigerator within a refrigerator," meat keeper keeps meat twice as long as an ordinary meat tray.

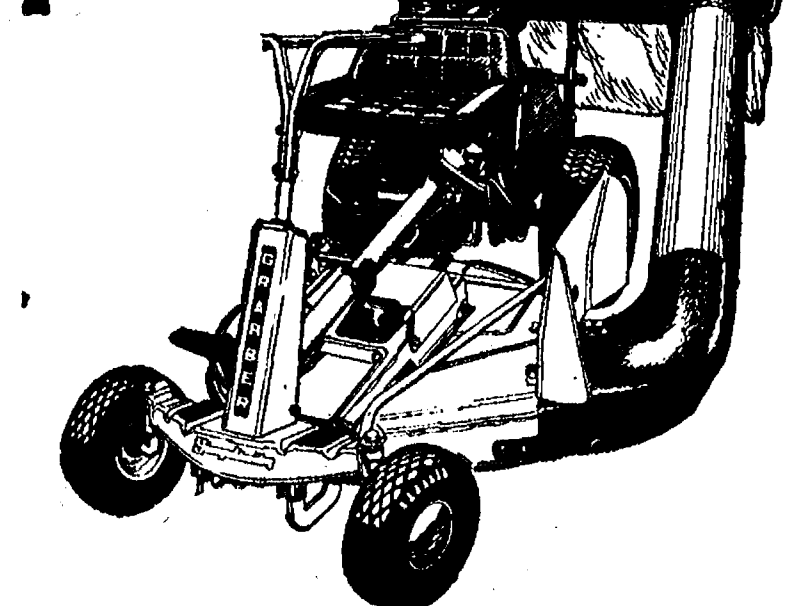
Adjustable shelves, adjust the height to the size of foods you store, anytime you need to.

Condiment shelf for small food items, on Stor-Mor Door.

Tall bottle shelves for half-gallons on Stor-Mor Door.

Exclusive Amana 5-year warranty. Covers parts and related labor for 5 full years.

The tough rider at a gentle price.



8 hp. Grabber

Built to take it. Rugged welded steel frame soaks up shocks. Free-floating mower cuts close to avoid scalping, mows a 30" swath. Two speeds forward, one reverse. Optional 6-bushel grass catcher fills completely, needs emptying less often. A lot more than an ordinary rider, because your yard is a lot more than a lawn.



Father Nature's right-hand man.

**CHELSEA
HARDWARE**

110 S. Main Ph. 475-1121

We Will Close Friday, June 7 at 5:30 p.m.

HEYDLAUFF'S
113 North Main St., Chelsea Phone 475-1221

DOLLHOUSE HOUSE and SHARON'S GIFTS & FLOWERS

are celebrating their first anniversary during the week of June 3 to June 8. Do come in and help us celebrate.

LOTS OF SALE ITEMS - REFRESHMENTS - PRIZES

No purchase necessary.

104 E. MICHIGAN - GRASS LAKE

Drum Major Clinic Scheduled Saturday

A drum major or majorette clinic for Chelsea High school will be conducted this Saturday, June 8, at 8:30 a.m. in the Beach Middle school band room.

U-M Regents-Alumni Scholars Named

Among 74 Washtenaw county high school seniors named as Regents-Alumni Scholars at the University of Michigan were two area residents. Linda Jean Brown of Dexter and David Klemer of Chelsea.

3 Juveniles Brandish Gun At Attendant

Three out-of-town juveniles brandished a .44 caliber black powder revolver at a Tower Shell attendant late Monday afternoon and threatened him dramatically with a line probably never heard before within the village limits, except on television: "Say one word and you're dead."

Tower Shell attendant Craig Maier, 5820 Stoffer Rd., reported to the Chelsea Police Department at 5:20 Monday afternoon that the station had been robbed by three subjects with a small hand gun. Officers Graves and Peebles responded to the call, advising the Washtenaw County Sheriff's Department that the subjects had left the station, heading east on I-94. A Sheriff's Department road block and the fast action of Dexter deputy Eric Rasmussen flushed two of the suspects out of the brush behind the I-94 rest area east of Baker Rd. The captured youths identified the third suspect, who has not yet been found.

The suspects told officers that they had threatened Maier, and had not robbed the station, a version later upheld by Maier's official statement to police. One of the youths has been charged with felonious assault in the incident. The youth has been staying with a family in Westland, to whom police have traced both the hand gun and the 1964 Chevrolet station wagon in the possession of the group.

Both youths have been released to the custody of their parents.

Registration Continues For Swim Program

Registration continues for this summer's swim lesson, sponsored by Chelsea Recreation Council. Potential swimmers should contact Jim Tallman at 475-7088 after 4 p.m.

Lessons will consist of three two-week sessions, with sessions scheduled for June 24 through July 5, July 8 through July 19, and July 22 through Aug. 2.

Second Section

The Chelsea Standard

Pages 7-12

CHELSEA, MICHIGAN, THURSDAY, JUNE 6, 1974



DOROTHY MILLER, Chelsea Community Hospital Governing Board member, does a traditional ribbon-cutting ceremony at the Surgical Center and Ambulatory Care Unit open house last week-end, but with an added medical twist: the ribbon is, of course, surgical gauze. Enjoying the ceremonies are Dr. Michael Papo, left, and Paul Mann, Board chairman.



THE TRADITIONAL CEREMONIAL KEY is presented to Dr. James Shadoun by Chelsea Community Hospital Governing Board chairman Reneo Papo, left, and Carol Avishay. The key opens the new Surgical Center and Ambulatory Care Unit, last week-end. Onlookers are Reneo Papo, left, and Carol Avishay.

Cyclist Pleads Guilty to Fleeing Police

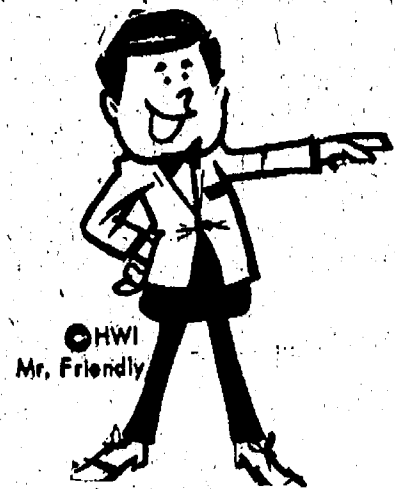
Chelsea Police officer Roger Graves participated in a bit of old-fashioned chase police work last week when he attempted to halt a motorcyclist for excessive noise and speeding.

Officer Graves reported that Michael R. Piatt, of 15631 Waterloo Rd., Grass Lake, failed to respond

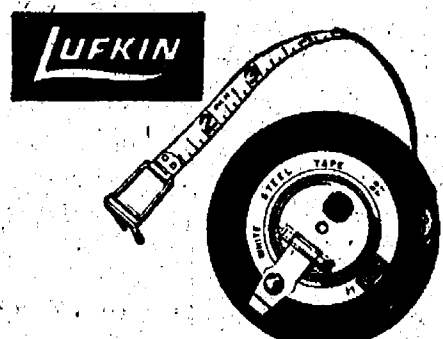
to Graves' activation of flashers and siren on his patrol vehicle. Piatt pulled into westbound Brown Dr., the police report said, which is a dead-end street. Upon reaching the end of the road, Piatt, with a passenger on his 1973 Yamaha and Graves and his patrol car close behind, continued into a field.

Piatt came to a halt in the field when he struck a mudhole, Graves reported. He allegedly refused to answer the officer's questions and cursed at him.

Piatt pled guilty to fleeing a police officer last Friday in 14th District Court and will be sentenced July 1.



CHELSEA LUMBER PUTS IT ALL TOGETHER FOR THE HOMEOWNER Why Pay More?



HOME SHOP Long Tape

Our Reg. \$4.19

50 ft. **\$3.09**

Our Reg. \$6.79

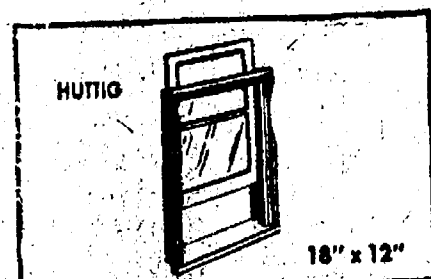
100 ft. **\$5.19**

THRU-DOOR VIEWER WIDE-ANGLE TELESCOPE EFFECT

Let's you see out without being seen!

OUR REG. \$3.49 **\$1.79**

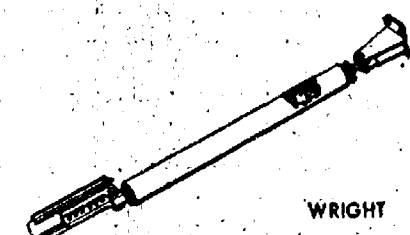
Drill 1/2" hole in door and install.



SLIP-HEAD SASH UNIT

Top grade pine, ideal for garages & utility buildings.

\$9.75



HYDRAULIC DOOR CLOSER

REG. \$2.99

Model V 1020 **\$2.19**



\$9.85

★ 3" O.D. Main Column

★ 8 1/2 Ft. High

★ 4 Ft. Cross Arm

★ 4 - Hook

★ Coated Inside & outside

★ In carton

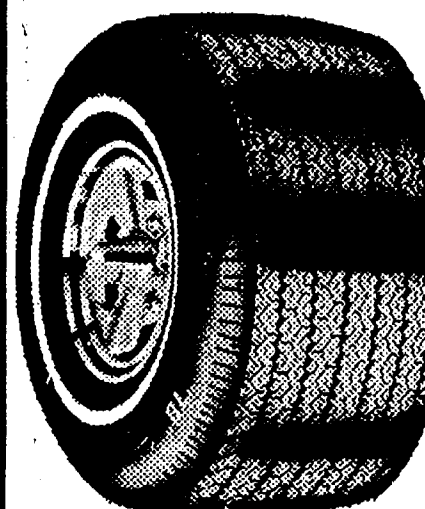
NEED CHAIN!

Chelsea Lumber Stocks TAYLOR-MADE

A dozen sizes Light-to-Heavy Duty

Sonic
HIGH QUALITY
TIRES AT

**DISCOUNT
PRICES**



- ★ STEEL RADIALS ★
- ★ STEEL BELTS ★
- ★ Fibreglass BELTS ★
- ★ 4-Ply POLYESTER ★
- ★ NYLONS ★
- ★ MUD & SNOWS ★

OVER 200 CAR
AND TRUCK
TIRES IN STOCK
AT ALL TIMES

WE HONOR
MASTER CHARGE
STANDARD OIL
BANK AMERICARD
AMERICAN EXPRESS
DINERS CLUB
CARTE BLANCHE
CHARGE CARDS

Ask about our
Free Replacement
Guarantee

Little Profit
The Little Profit saves you
more than anything you
ever bargained for

COMPARE WITH
ANN ARBOR PRICES

PALMER FORD
61 Years in Chelsea
Since April 1912

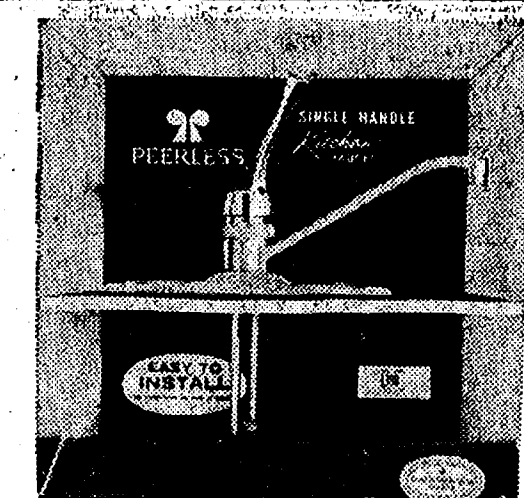
Sonic

PEERLESS WASHERLESS FAUCETS

REPLACE OLD, LEAKY FAUCETS QUICKLY, PERMANENTLY

- Mod. 8500 Kitchen Faucet - Single Lever, With Spray **\$25.29**
- Mod. 9200 Kitchen Faucet - 2 Faucet Unit, Lucite or Chrome **\$16.09**
- Mod. 8600 Lavatory Faucet - Single-Handle Control **\$18.79**
- Mod. 8730 Bath Set - Single Mixer for Tub & Shower **\$22.29**

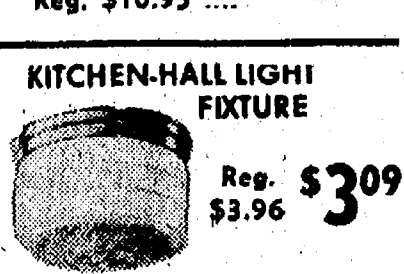
ALL PEERLESS UNITS CARRY A 5-YR. NO-DRIP WARRANTY!



DIMMER CONTROL
FULL RANGE

SINGLE POLE
Reg. \$5.59 **\$3.97**

THREE-WAY
Reg. \$10.95 **\$8.97**



KITCHEN-HALL LIGHT
FIXTURE
Reg. \$3.96 **\$3.09**

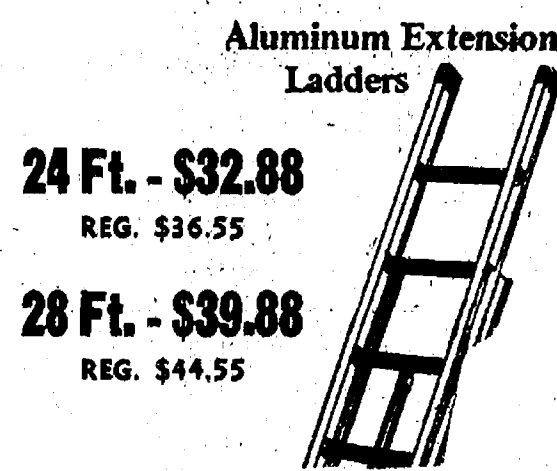
Ribbed white glass
with crystal bottom.
10 1/2" dia. (Less
bulb.)

LADDERS FROM A 2-FT. STEP-STOOL TO A 40-FT. EXTENSION LADDER

THE "FRIENDLY ONE'S" GOT 'EM IN ALUMINUM OR WOOD!



ALUMINUM
Stepladder
EXTRA STURDY
CONSTRUCTION
Reg. \$11.45 **\$9.88**



Wood
Straight Ladders

REG. \$20.75 10 Ft. **\$18.45**

\$25.17 12 Ft. **\$22.15**

\$29.75 14 Ft. **\$25.85**



13 PC. HIGH-SPEED
DRILL SET

\$4.88

Our Reg. \$6.49

Faster cutting action... precision
ground flutes and edges... heat
treated for extra long life. Sizes
3/8" to 1 1/2".



Pop Rivet
Kit
K-104

\$2.69

Reg. \$3.39 Value

Easier, better, faster than screws,
nuts and bolts. Fasten metal, hard-
board, plastic, leather and even ply-
wood. Supply of assorted "POP"
rivets.



ELMER'S
EPOXY GLUE

79¢

Reg. 98¢

When you want it to stick!



4-1/2 CUBIC FOOT
WHEELBARROW

\$43.99

SAVE \$5.00!

**PROPANE
TORCH
KIT**

7-Pc. Kit
in Metal Case

MOD. 329095 **\$8.29**

OUR REG. \$10.49



Send-Mix
Gravel-Mix
Mortar-Mix

98¢

— JUST ADD WATER —



SAW-HORSE BRACKETS
USE WITH 2x4's

\$1.97

Our Reg. \$2.29



BOSTITCH
STAPLE GUN

\$9.88

Our Reg. \$11.95

SPECIAL PRICES GOOD THURS., JUNE 6 THRU SAT. JUNE 15

CHELSEA LUMBER

MAIN ST.
AT THE CLOCK TOWER
Shop Mon. Thru Fri. 7:30 to 5:30
Sat. 7:30 to 3:30

...JUNE 16 IS A SPECIAL DAY FOR FATHER

LEVI'S SLACKS
and JEANS

100's to choose from.
Really, the selection
is great!

DRESS SHIRTS
SPORT SHIRTS

We have them by
the hundreds.

BELTS - TIES
BILLFOLDS

Big selection.

SWIM WEAR
HANES
UNDERWEAR

The selection is good.

HANES SOX

You can't miss finding the
right pair at Dancer's.

Shop Dancer's for Dad's Gift

We have friendly people to help you
make a good selection!

DANCER'S

Chelsea's Friendly Dept. Store

WANT ADS

WANTED — Wicker rocking chair and settee. Ph. 475-1719, after 5 p.m. x52

FOR SALE — Boat, motor, trailer, 20 h.p. Chrysler. Washing machine, 25-lb. 1" roofing nails. Garage sale, misc. Bruin Lake West Shore. Ph. 498-2037. x51

SECURITY GUARDS

Chelsea, Manchester
Whitmore Lake areas.
Phone 761-5515
for appointment,
or apply at
290 S. Wagner Rd.
Ann Arbor
SANFORD SECURITY SERVICE,
INC. x451f

-- YOUNG --

We list and sell lake, country and town properties. Eugene Young, Real Estate & Builder, 878-3792, 11586 Dexter-Pinckney Rd., Pinckney 48169. x341f

Roofing, Aluminum
& Vinyl Siding
Gutters, Storms
& Window Trim

For Free Estimate
Call (517) 851-8657

Mills
Construction Co.

3986 M-52, Stockbridge 391f

Automotive
Rust Proofing
Cars and Trucks

Village
Motor Sales, Inc.
IMPERIAL - CHRYSLER
DODGE - PLYMOUTH
Phone 475-8661
1185 Manchester Rd., Chelsea
Hours: 8 a.m. to 6 p.m.
Tues. thru Fri. Until 9 Monday.
9 a.m. to 1 p.m. Saturday 211f

Plumbing, Heating &
Electrical Contracting

HILLTOP

1414 S. Main St. - Chelsea

The Day of the
Ugly Bath Is Dead!

Yesterday's most functional of all rooms in your house has been changed in ways that five years ago would have been impossible. Bathroom design has exploded in an array of dazzling colors and materials.

Come See the
Bath People!

Phone 475-2949 x451f

WEDDING INVITATIONS, napkins, matches, decorations, Chelsea Card & Gift Shop, 116 S. Main St. 475-7501. x51

WANTED TO RENT — Family building in area needs 2- or 3-bedroom home. Short term lease, June to fall. (1) 651-9246, 451f

FOR SALE — Feeder pigs. Ph. 475-1968, after 7 p.m. 451f

FOR SALE — 68 Plymouth Belvedere, 4-door, 6-cylinder. Excellent on gas and transportation. Call 475-2627. x51

WANT ADS

WANTED — Businessman seeks quiet Washtenaw county farm to rent, lease and/or with option to buy. Barn, garage and outbuildings in good condition desired. Call 761-4433. x52

HELP WANTED — General all-around maintenance man, with some skills. Middle-aged preferred. Call 475-8633. x51

HOME-MADE QUILT for sale. Call 475-8401. x51

BEAGLE PUPS for sale, good hunting stock. Ph. 475-2584. x51

FREE PUPPIES, black and white. Ph. 878-9743. x51

Real Estate

3-BEDROOM all carpeted home. 1-car garage, 4th bedroom. In basement, recreation room with bar, carpeted. Laundry room and workshop. 3 minutes to I-94. \$24,900. x51

CLOSE TO I-94, 120x161 building lot. \$1,200.

Kira Henry
Real Estate

(517) 764-1416 anytime 51

ANTIQUE BRASS BED Wanted — Phone 662-0524.

LEHMAN WAHL

Land Appraisal
Residential
and Farm
17037 West Austin Rd.
Manchester, Mich.
Area Code 313
423-8886 21f

CALL FRANK for all your carpet cleaning jobs, moving or week-end. Needs only 3 hours to dry. Only 10¢ per square foot. Phone now for free estimate, 761-4328. All work guaranteed. 331f

Fireplace Builder

Field stone mason, block and brick mason, tuck pointing.
FREE ESTIMATES
Call 475-8025 after 3 p.m.

Patrick Grammatico

HAMMOND ORGAN teachers wanted to teach in their own homes. Call Grinnell Brothers, Ann Arbor, 662-5667. 341f

Mobile Home For Sale

Available immediately on lot, Whitmore Lake area. 12 ft. x 60 ft., with shed, beautiful interior, \$4,900. 665-7530. x52

EXPERIENCED PAINTERS — Interior - exterior. Reasonable rates. References available. Free estimates. Mike Froelich, 663-5663. x501f

DAVE'S

SIDING CO.

Free estimates on aluminum siding and custom trim, aluminum gutters, doors and windows.

Call Gregory 498-2423

Gregory, Mich. 481f

FENCE

Specializing in chain link fence. A-1 work. Guaranteed. Free estimates. Any size, residential, commercial, repairs. Call Herb, 475-1716. x2

WANT ADS

WANTED — Fiberglass or aluminum speedboat, fair condition, about 12 to 14 ft., and motor if have one, between 40 and 60 h.p. Call 475-2110 anytime. x51

FOR SALE — Registered half Arabian gelding, 2½ years old, halter broke, sound and gentle, \$200. 9541 Huron River Dr. 426-8094. x51

Help Needed At Once!

Saleslady needed by local merchant, steady job.

Write to Box JU-6
in care of Chelsea Standard. 51

FOR SALE — 15 foot fiberglass float boat, 35 h.p. Johnson electric motor. Dune buggy. 1 h.p. air compressor. Very cheap, must sell. 426-4432. x51

NOW

Full Time

Complete

Body Shop

Service

Stop in For An Estimate

PALMER FORD

222 S. Main St.
475-1301 271f

CUSTOM

BUILDING

LICENSED & INSURED
FREE ESTIMATES

TOTAL

CONSTRUCTION

SERVICES

—Residential, commercial and industrial
—Garages
—Remodeling - Additions
—Aluminum Siding
—Roofing
—Trenching

SLOCUM

CONTRACTORS

& BUILDERS

Serving Washtenaw County

For Over 20 years

20700 OLD US-12

CHELSEA

Phone 475-8321 or 475-7611 221f

Pine Haven Saddlery

4534 Dexter Townhall Rd.
Phone Dexter 426-4268

Complete line of English and Western equipment, 10% discount to all 4-H Club members.

Store Hours: Mon.-Sat., 9-9
Sunday, 10-9 x521f

NEW and REMODELING

Residential

Carpenter Contractor

M. A. LAWRENCE

1-517-522-4364 x71f

BUILDERS—House and barn roofing, all types of roof repairs, aluminum storm windows and doors, aluminum siding and gutters, awnings, porch enclosures, garage and room additions, cement work. Call Joe Hayes for free estimates, Manchester 428-8520. x161f

Sand Gravel

KLINK

EXCAVATING

Bulldozer - Backhoe
Road Work - Basements
Trucking - Crane Work
Top Soil - Demolition
Drainfield - Septic Tank
Trenching, 5' up
Industrial, Residential, Commercial
CALL 475-7681 181f

Headquarters for

RED WING

WORK SHOES

Foster's Men's Wear 401f

MUNITH AUCTION—100 Main St., Munith, Mich. Auction every Sunday, 6 p.m. Danny Fleming, auctioneer. x121f

STOCKBRIDGE, 18 acres, commercial, on M-52. (517) 851-8144. 851f

Fry Cook Wanted

11 a.m. to 5 p.m.

See Mrs. McMillan at

Chelsea Restaurant

from 8:30 a.m. - 1:30 p.m., or after 5 p.m. 871f



"No, I didn't call the roofer we saw in the Standard Want Ads — I thought you did!"

WANT ADS

FOR SALE — 15-ft. fiberglass ski boat, 40 h.p. Evinrude motor. Call 475-7313. x52

Junior Accountants

To handle all daily and periodic accounting functions, including posting sales, cash receipts, accounts payable, etc. We are looking for a graduate or someone with comparable experience or who is willing to learn on the job. Please contact Tom Goodwin at 475-9111, between 8 a.m. and 4:30 p.m. weekdays.

Fortune Industries

11770 Dexter Rd., Chelsea 48118 x511f

WANTED — Someone to custom cut and bale 16 acres of alfalfa or put up on shares. Call 426-4198. x51

Chelsea Schools

Beautiful, secluded 1- and 2-acre wooded parcels bordering private lake and state land. Custom building available.

Jim Fahey

BUILDER

Ph. 475-9305 x2

CARPENTER — Remodeling, additions and home building. Ph. 426-4017. x471f

Gem Travel Trailers

and Campers

PICK UP COVERS

4' — \$100.00

28' — \$179.00 and up

Triangle Sales

Chelsea 475-4802 401f

CAR RENTAL by the day, week-end, week or month. Full insurance coverage, low rates. Call Lyle Chriswell at Palmer Motor Sales, 475-1801. 251f

FOR RENT — American Legion Hall, \$50. Call 475-1824. 301f

SHOES FOR REPAIR picked up and delivered every Saturday at Parish's Cleaners, 113 Park St., Chelsea, Mich. x161f

D&G Allen Excavating

Septic Tanks and Drainfields

Back Hoe and Dozing

Sand, Gravel and Topsoil Hauled

Phone (517) 851-8386

or (517) 851-8278 431f

OFFICE SPACE for rent, Merkel Home Furnishings. Ph. 475-8821. 301f

FOR SALE — 1971 Ford 4-door sedan, loaded with extras. Well maintained and driven discreetly. Come see and make an offer. Call Clint Melvin at 475-8633. 401f

CHUCK SELESKA — Bulldozing, backhoe, trucking. Reasonable prices. Call after 5:30 p.m. 426-4746. x51

Complete

Body Repair

Service

Bumping - Painting

Windshield and Side Glass

Replacement

Free Pick-up & Delivery

Open Monday Until 9

CONTACT DON KNOLL

FOR FREE ESTIMATE

Village

Motor Sales, Inc.

IMPERIAL - CHRYSLER

DODGE - PLYMOUTH

Phone 475-8661

1185 Manchester Rd., Chelsea

Hours: 8 a.m. to 6 p.m.

Tues. thru Fri. Until 9 Monday.

9 a.m. to 1 p.m. Saturday x401f

PART-TIME EMPLOYMENT — Excellent pay for time invested. Openings available for men and women up to age 35. Veterans may qualify up to 45 years of age. Many skilled and semi-skilled positions available. Call Ann Arbor National Guard Armory, 682-0400, 9 a.m. to 9 p.m. daily, June 3 to June 14. x52

WANT ADS

FOR SALE — Electric stone, old, but very good condition, \$20. Ph. 426-3733. x51

BABY-SITTER needed. Reliable and experienced, with own transportation. For 8-mo. and 2-yr.-old. Several times a week. North Lake area. Ph. 475-9305. x52

MARRIED professional couple want to rent house or apartment in Chelsea-Dexter area. Will provide security deposit, references. Call 475-2175 week-days. x51

36-ACRE FARM

Near Manchester and close to lake. Remodeled farm house, 2 barns, dog kennel, garage, \$53,500.

Ehman & Greenstreet

BROKERS

Ph. Ypsilanti HU 2-3484

Evenings HU 2-5401 or HU 3-9776 x51

ELECTRICAL WIRING of all types New and rewiring. Ph. 426-4855. x201f

EVINGER REAL ESTATE, Alpine St., Dexter. Phone 426-8518. x181f

SEE US for transit mixed concrete. Gravel Co. Phone Chelsea 475-2530, 4920 Loveland Rd., Grass Lake, Mich. x401f

TRAVEL TRAILERS — 13-ft. and up; 10x55 ft. trailers. John R. Jones Trailer Sales, Gregory, Mich. Phone 498-2655. 431f

WANTED — Carpentry work, any type. Charles Romine. Ph. 475-7474. 361f

PIANO TUNING, Chelsea and area. Facilities for reconditioning and rebuilding. Used piano sales; reconditioned grands and verticals. E. Ecklund. 426-4429. x501f

ASPHALT PAVING

Driveways - Parking Areas

Landscaping - Site Work

PREVO EXCAVATING CO.

(517) 851-8603 or (313) 453-1027 x431f

FOR SALE — Indian cents, postcards, books, foreign coins, Australian opals, and other articles. Lawrence E. Guinan, 1571 Sugar Leaf Lake. Call 475-2317. x371f

SEAMLESS ALUMINUM eaves, troughs installed and guaranteed. White and colors available. For free estimates, call Rick Kleinschmidt, R. D. Kleinschmidt Co., 428-8838. x451f

WEDDING INVITATIONS, napkins, matches, decorations, Chelsea Card & Gift Shop, 116 S. Main St. 475-7501. x51

WATERLOO

GARAGE

15615 Clear Lake Rd.

OPEN 7 DAYS A WEEK

Bottle Gas

White Gas

75 Worms 50¢

Crawlers 50¢ a doz.

Ice 89¢ 52

DIG YOUR OWN

Pine quality evergreens: Spreading and Hicks yews, Pyramid and Globe Arbor Vitae, Pfitzers, also Birch Clumps, Mountain Ash, Flowering Crab, Norway, Crimson King, and Regal Red Maples.

All State Inspected

FREE ESTIMATES

Faist's

Evergreen Nursery

11382 Trist Rd.

Grass Lake

Phone (517) 622-4588 2

ARE YOU BUILDING your own home? Construction money available for residential homes. Marflax Corp., Ph. 665-9166. x491f

PIERSON

& SONS

LICENSED GENERAL

CONTRACTORS

475-8750

New Construction,

Remodeling, Siding.

WANT ADS

EXPERIENCED PAINTER will do interior and exterior painting. Local references. Reasonable rates. Wayne Sparks, 142 South St., Chelsea. Ph. 475-1303. x52

YARD SALE — Saturday, June 8, 9 a.m. to 5 p.m., at 144 Van Buren St., Chelsea. Ph. 475-8215. x51

FOR SALE — 5 h.p. Rupp mini-bike. Brand new motor and clutch, \$115. Call 475-2173 after 4 p.m. x51

MOVING, GARAGE SALE — Dishes, lamps, pictures, toys, tools, lawn mowers, tractor-lawn sweeper, push sweeper, humidifier, lots more. Thursday, Friday, Saturday, 1 p.m. to 5 p.m., 888 Washington. x51

PONY WAGON for two ponies, double pony harness, rubber tires. Excellent condition. Call Grass Lake (517) 522-8863. x501f

FOR SALE — 17-ft. Avon fiberglass boat with fiberglass sliding top. Very nice ski or coho boat, 50 h.p. V-4 Evinrude motor. Te-Nee heavy duty trailer. Call 475-8469 after 6 p.m. x501f

LOST — White and gray male cat, vicinity of Polly's Market. Please call 475-9305. 51

SALES LADY WANTED for local store, full time. Experience not necessary. Reply to Box M-31, The Chelsea Standard. 51

REWARD — Lost Sealpoint Hime-layan male cat, beige, long hair, with dark paws and face. Answers to "Boris." North Lake-Hadley Rd. area. Please call 475-9305. 51

FOR SALE — Tandem bicycle, like new, \$100. 426-8214 after 5 p.m. x51

FOR SALE — Russian Samoyan puppies, five weeks old. Ph. 475-2886. 51

NEEDED — Person to do ironing, once every two weeks. Call 475-9305. 51

4-FAMILY GARAGE SALE, June 7-8, 9 to 5, 13019 E. Old US-12, Chelsea. x51

FOR REAL DOLLAR SAVINGS be sure and see us before you buy any new or used car. Palmer Motor Sales, Inc

+ Services in Our Churches +

ST. PAUL UNITED CHURCH OF CHRIST

The Rev. John Rinehart
Interim Pastor
Thursday, June 6—
1:30 p.m.—Prayer Group.
Sunday, June 9—
9:00 a.m.—Church school.
10:00 a.m.—Worship service. The
Rev. Douglas Schneider, guest min-
ister.
2:00-5:00 p.m.—Autograph party
for Douglas Schneider's new book.
Wednesday, June 12—
8:00 p.m.—Eastern Star recep-
tion and dinner.
Sunday, June 16—
Summer hours begin.
10:00 a.m.—Church school and
worship service.

ZION LUTHERAN CHURCH

Corner of Fletcher, Waters Rds.
(Rogers Corners)
The Rev. John R. Morris, Pastor
Saturday, June 8—
9:00-10:30 a.m.—9th grade youth
instruction.
Sunday, June 9—
9:00 a.m.—Sunday school.
10:15 a.m.—Worship with corn-
stone laying ceremony.
Monday, June 10—
9:00-11:00 a.m.—Vacation Bible
school, Pleasant Lake school.
8:00 p.m.—Senior Choir only.
Tuesday, June 11—
9:00-11:00 a.m.—Vacation Bible
school, Pleasant Lake school.
Wednesday, June 12—
9:00-11:00 a.m.—Vacation Bible
school, Pleasant Lake school.
8:00 p.m.—Church Council.
Thursday, June 13—
9:00-11:00 a.m.—Vacation Bible
school, Pleasant Lake school.

ST. THOMAS EVANGELICAL LUTHERAN

Ellsworth and Haab Rds.
The Rev. Daniel L. Mattson, Pastor
Sunday, June 9—
9:45 a.m.—Sunday school and Bi-
ble class.
11:00 a.m.—Worship service.
Wednesday, June 12—
8:30 p.m.—Choir rehearsal.

IMMANUEL BIBLE CHURCH

145 E. Summit St.
The Rev. LeRoy Johnson, Pastor
Every Sunday—
9:45 a.m.—Sunday school, nur-
sery provided.
11:00 a.m.—Morning worship,
nursery provided.
7:30 p.m.—Family hour, prayer
meeting and Bible study.
First Sunday of Month.
7:00 p.m.—Communion service.
10:00 a.m.—Sunday school.

FIRST UNITED PRESBYTERIAN CHURCH

Unadilla
The Rev. T. H. Liang
Every Sunday—
9:45 a.m.—Sunday school.
11:00 a.m.—Worship service.

CONGREGATIONAL CHURCH (United Church of Christ)

The Rev. Carl Schwartz, Pastor
Sunday, June 9—
9:30 a.m.—Worship service and
children's sermon.
Monday, June 10—
9:30-11:30 a.m.—Vacation Bible
school.
7:00 p.m.—Deacons.
Tuesday, June 11—
9:30-11:30 a.m.—Vacation Bible
school.
Wednesday, June 12—
9:30-11:30 a.m.—Vacation Bible
school.
11:15 a.m.—Rachel Chapter.
Thursday, June 13—
9:30-11:30 a.m.—Vacation Bible
school.

ST. JOHN'S EVANGELICAL AND REFORMED CHURCH

(United Church of Christ)
Francisco
The Rev. J. P. Goebel, Pastor
Every Sunday—
9:00 a.m.—Adult Bible study.
10:00 a.m.—Regular worship ser-
vice and Sunday school.

NORTH LAKE UNITED METHODIST CHURCH

The Rev. J. William Todd, Pastor
Every Sunday—
9:45 a.m.—Worship service.
11:00 a.m.—Sunday school. Nur-
sery available.
Every Wednesday—
4:00 p.m.—Children's Choir.
7:00 p.m.—Adult Choir.

BETHEL EVANGELICAL AND REFORMED CHURCH

(United Church of Christ)
Freedom Township
The Rev. Roman A. Reineck
Every Sunday—
10:00 a.m.—Worship.

WATERLOO FIRST UNITED METHODIST

Parks and Territorial Rds.
The Rev. Altha Barnes, Pastor
Every Sunday—
9:15 a.m.—Morning worship.

WATERLOO VILLAGE UNITED METHODIST CHURCH

8118 Washington St.
The Rev. Altha Barnes, Pastor
Every Sunday—
10:00 a.m.—Sunday school.

CHURCH OF JESUS CHRIST OF LATTER-DAY SAINTS

Meetings at
St. Barnabas Episcopal Church
20500 Old US-12
Every Sunday—
11:00 a.m.—Priesthood meeting.
12:30 p.m.—Sunday school.
5:30 p.m.—Sacrament meeting.

CHELSEA MEDICAL CENTER

Every Other Wednesday—
1:30 p.m.—Worship service.

FIRST UNITED METHODIST CHURCH

The Rev. Clive Dickins, Pastor
Saturday, June 8—
10:00 a.m.—Church Choir.
10:30 a.m.—Junior Choir.
Sunday, June 9—
9:00 a.m.—Church school, nur-
sery through adult classes.
10:00 a.m.—Worship service.
Wednesday, June 12—
8:00 p.m.—Chancel Choir.

ST. BARNABAS EPISCOPAL CHURCH

20500 Old US-12
The Rev. C. Walter Fitch, Vicar
Telephone 426-3513
Every Sunday—
9:15 a.m.—Holy Communion, first
third, and fifth Sundays.
9:15 a.m.—Morning Prayer, sec-
ond and fourth Sundays.
9:30 a.m.—Sunday school.
10:15 a.m.—Choir rehearsal.

ST. MARY CATHOLIC CHURCH

The Rev. Fr. David Philip Dapais
Pastor
Mass Schedule
Every Saturday—
4:00-5:00 p.m.—Confessions.
7:00 p.m.—Mass.
Immediately after 7 p.m. Mass—
Confession.

SALEM GROVE UNITED METHODIST CHURCH

3320 Notten Rd.
The Rev. J. William Todd, Pastor
Every Sunday—
10:00 a.m.—Sunday school.
11:00 a.m.—Worship service.

GREGORY BAPTIST CHURCH

The Rev. Paul White, Pastor
Every Sunday—
10:00 a.m.—Worship.
11:10 a.m.—Sunday school.
7:00 p.m.—Evening worship
service.
7:30 p.m.—Thursday mid-week
service.

ST. JACOB EVANGELICAL LUTHERAN CHURCH

12501 Riethmiller Rd., Grass Lake
The Rev. Andrew Bloom, Pastor
Every Sunday—
9:00 a.m.—Worship service.
10:15 a.m.—Divine services.

CHURCH OF CHRIST

13681 Old US-12, East
David A. Rushlow
Every Sunday—
10:00 a.m.—Church school.
11:00 a.m.—Worship service.
Nursery will be available.
6:00 p.m.—Worship service.
Every Wednesday—
7:30 p.m.—Bible study.

BAHA'I FIRESIDE

Every Thursday—
8:00 p.m.—At the home of Toby
Peterson, 705 S. Main St. Anyone
wishing to learn about the Baha'i
faith is welcome.

NORTH SHARON BIBLE CHURCH

Sylvan and Washburne Rds.
The Rev. William Ensen, Pastor
Every Sunday—
10:00 a.m.—Sunday school.
(Nursery will be available.) Junior
church classes.
11:00 a.m.—Worship service.
6:00 p.m.—Senior High Youth
meeting. Youth Choir.
7:00 p.m.—Evening worship ser-
vices. (Nursery available.)
Every Wednesday—
7:00 p.m.—Bible study and pray-
er meeting. (Nursery available.)
Bus transportation available: 428-
7222.

OUR SAVIOR LUTHERAN CHURCH

The Rev. William H. Keller, Pastor
1515 S. Main, Chelsea
Every Sunday—
9:00 a.m.—Sunday school.
9:00 a.m.—Adult Bible class
10:30 a.m.—Worship service.

FIRST CHURCH OF CHRIST, SCIENTIST

1883 Washtenaw Ave., Ann Arbor
Every Sunday—
10:30 a.m.—Sunday school;
morning service.

Gospel Meetings Start June 9 at Assembly of God

The Rev. Daniel Roehl of Grand
Rapids will conduct a series of
gospel meetings at the First As-
sembly of God, 14900 Old US-12
E. in Chelsea from June 9 to 16,
according to Pastor J. B. Thode-
son.

The Rev. Roehl is returning by
request of many interested friends
for these meetings. He is charis-
matic and biblical in theology and
relevant to the times.

Wednesday night has been des-
ignated for the youth and Thurs-
day night has been designated for
helping the sick and physically
troubled. The Rev. Roehl has re-
cently had a miraculous recovery
from cancer and because of per-
sonal experience is able to help
those who need more than medical
aid to see them through.

Morning prayer meetings begin at
10 a.m. and special counseling
hours may be arranged by appoint-
ment.

All evening meetings begin at 7
p.m. and are open to the public.

Michigan ranks first in 20 manu-
facturing categories including mo-
tor vehicles and cereals.

METHODIST HOME CHAPEL

The Rev. R. L. Clemans, Pastor
Every Sunday—
8:45 a.m.—Worship service.

FIRST ASSEMBLY OF GOD

The Rev. Thode B. Thodeson
Pastor
Every Sunday—
9:45 a.m.—Sunday school.
11:00 a.m.—Worship service.
6:00 p.m.—Youth service.
7:00 p.m.—Evangelistic service.
Every Tuesday—
9:30 a.m.—Ladies Bible study.
Every Wednesday—
7:00 p.m.—Midweek services.

ST. JOHN'S (UNITED CHURCH OF CHRIST)

Rogers Corners
The Rev. Richard Campbell, Pastor
Every Sunday—
10:00 a.m.—Sunday school.
11:00 a.m.—Worship service.

CHELSEA BAPTIST CHURCH

337 Wilkison
The Rev. James Stacey, Pastor
Every Sunday—
9:45 a.m.—Sunday school.
11:00 a.m.—Worship service.
Nursery care available during all
services.

6:00 p.m.—Junior and Senior Baptist Youth Fellowship.

7:00 p.m.—Evening service.
Every Wednesday—
7:00 p.m.—Bible study and
prayer meeting.

Help Offered Volunteer Meal Drivers

Several benefits available to per-
sons over 60 years provided by the
Washtenaw County Retired Senior
Volunteer Program (RSVP) may
aid Home Meal Service of Chel-
sea in its now-critical quest for
volunteer meal drivers.

Mrs. Mary Ann Merkel, a mem-
ber of the board of Home Meal
Service, reported this week that
RSVP has informed board mem-
bers that benefits available to
RSVP members who wish to vol-
unteer as meal drivers include:

—accident and public liability in-
surance coverage during the time
of volunteering at an RSVP "sta-
tion" (Home Meal Service consti-
tutes a station). The insurance cov-
erage includes the trip from the
volunteer's home and return, pro-
vided no interim stops, no matter
how small, are made.

—transportation reimbursements
at 10 cents per mile from the vol-
unteer's home to the point of vol-
unteering and return.

—reimbursement at \$1 per meal
to individuals who volunteer
around a meal hour and must pro-
vide his or her own meal.

Over 60 volunteers may obtain
these RSVP benefits simply
through RSVP membership. For
further information, potential vol-
unteers should contact Jean Law-
rence, assistant director of RSVP,
at 971-7780.

The board of Home Meal Service
also extends its plea to potential
volunteers from other age groups.
"Perhaps college or high school
students who work the afternoon
shift would be interested in donat-
ing some of their free time," Mrs.
Merkel suggested.

Most volunteer drivers drive
only one day a week, which means
volunteering one hour per week.
Meals are ready for transport to
participants at 11 a.m. Home Meal
Service provides 18 people with
its "one hot meal a day," which
demands three separate routes.

Volunteers who might be able to
work as substitute drivers on oc-
casion are also urged to contact
a member of Home Meal Service,
Mrs. Merkel said. All new driv-
ers are trained by an experienced
driver.

For more detailed information,
contact any board member: Bon-
nie Kraus, 475-1686; Ann Steina-
way (evenings) 475-2923; Caralee
Hoffmeyer, 475-8014; and Mary
Ann Merkel, 475-2739.

10,200 persons were admitted to
Michigan state hospitals for men-
tally ill last year.

Gospel Echoes Will Appear at Immanuel Church

The Gospel Echoes, a Detroit-
area musical group, will appear at
Immanuel Bible church, 145 E.
Summit St. on Sunday evening,
June 9, at 7:30 and 8:30.

The men in the group are em-
ployed in various jobs and pro-
fessions and have banded together
in a common interest in making
Jesus Christ known in song and
testimony. The Gospel Echoes not
only sing some of the well-known
contemporary gospel songs of to-
day, but they also blend their
voices in the hymns of the church
that have been favorites for gen-
erations.

The public is invited to attend.

Michigan is the hub of the rich
Great Lakes industrial market
area. Over 70 million consumers
are within 500 miles of Michigan's
capital.

The Chelsea Standard, Thursday, June 6, 1974 11

A total of \$4 pollution incident prevention plans from Michigan in-
dustries and municipalities recently
reached the Department of Natural
Resources. The plans, now being
reviewed for adequacy by the
DNR's Bureau of Water Manage-
ment, prescribe procedures for pre-
venting or containing losses of oil,
salt, and other pollutants.

MARSHALL TRUCKING

**DRAW LINE - BACK HOE
SAND - GRAVEL - LIMESTONE
WASHED STONE**

**Immediate Service
FREE ESTIMATES**

Call 428-8123, evenings 685-8321

DUNBAR'S DEXTER LOCKER

PAUL DUNBAR, OWNER

8083 MAIN ST., DEXTER

PHONE 426-8466

It's Bar-B-Q Time . .

**Stock Up on
Steaks at This
Special Price . .**



8 oz. N. Y. Strips, or

8 oz. Delmonicos

\$1.19

each

(in 5-lb. boxes)

Single Steaks and Roasts Also Available

CUSTOM SLAUGHTERING & PROCESSING

Mobil Tire Inventory Sale

Mobil Cushion 78 Belted

\$13¹⁰

Suggested
selling price,
plus \$1.50
Fed. Tax and
your old tire.
(B78x13 Tubeless)

Mobil Cushion 78 Belted

Suggested selling prices.

SIZE	REG. PRICE	SALE PRICE	FED. TAX
F78x14	\$40.95	\$22.00	\$2.50
G78x14	\$42.95	\$26.00	\$2.67
H78x14	\$44.95	\$27.10	\$2.94
G78x15	\$43.95	\$25.60	\$2.73
H78x15	\$45.95	\$28.30	\$2.96

All dealers reserve the right to establish their
own prices and discounts.

Save Now... Pay Monthly

You can charge your tires to your Mobil
Credit Card and take advantage of convenient
budget terms. We also honor Master Charge,
BankAmericard, American Express and
Carte Blanche.

Mobil®

GLENN'S MOBIL SERVICE

1629 M-52 at I-94, Chelsea

MOBIL'S LARGEST TIRE SALES

Phone 475-1767

MILK

**Bring on the Milk!
It's snack time!**

The call goes out for milk
and more milk when the
youngsters take time out
for an energy-building
snack. Be ready!



Milk is Nature's wonder-food. Drink it daily!

Hickory Ridge Farm Dairy

(Successor to Weinberg Dairy)

Stockbridge Mich. Phone (517) 851-3000

EINO S. MICHELSON

for

CHELSEA BOARD OF EDUCATION

QUALIFICATIONS INCLUDE:

- ★ School financing
- ★ School building planning and design
- ★ Millage and bond issue programs
- ★ Personnel administration
- ★ Contract negotiations
- ★ Instructional programming and supervision
- ★ Teaching and counseling
- ★ Public relations and school information services

VOTE — MONDAY, JUNE 10, 1974



CHS VARSITY TENNIS PLAYERS who were honored at last Thursday's high school Athletic Banquet are, from left, Duane Luick and Dan Hagen, the squad's two most valuable players, and Jane Belser and Debbie Bertke, third year varsity players.



MOST VALUABLE GOLFER for Chelsea was Mike Forty, who was among those honored at the school's Athletic Banquet last Thursday. Chelsea linksmen finished second in the Southeastern Conference behind Brighton in this year's golf action.

Coaches Needed for Girls Softball Teams

Adults interested in working with girls, ages 10 through 15, by coaching girls Recreation Council teams are currently needed. For more information, contact Jeannette Schlee at 475-8834, or Shirley Vandervoort at 475-2611.

Telephone Your Club News To 475-1371

12 Confirmed At Methodist Church Sunday

Pentecost was observed on June 2 at First United Methodist church of Chelsea with a rock cantata, "The Creation" written by David Bobrowitz and Steven Porter. The Festival Choir of the local church under the direction of June Warren, prepared this special music event.

Instrumental accompaniment was provided by Gary Robertson, pianist; Curt Winans, guitar; Brian Arnett, bass; and Dave Klemmer, drums.

Twelve persons experienced the rite of confirmation following membership instruction and public confession of Jesus Christ as Lord and Saviour.

Those persons confirmed were: Michal Ann Benedict, Jeffrey Scott Boyer, John Craig Daniels, Karen Lynn Dresch, Stephen Harold Dresch, Joseph Daniel Ewald, Erin Michelle Headrick, Timothy John Sweeney, and Debra Kay Watson.

Received into membership by transfer were: Mrs. Ruth Woerner and Al Luck. The Rev. George Woerner also was welcomed by the congregation.

The theme developed through the worship experience, "In the Beginning," emphasized the beginning of mankind, the beginning of Jesus' ministry, the beginning of the Church and the beginning of Christian commitment.

On Sunday, June 9, the youth of the local church have accepted responsibility for an innovative worship experience.



Troop 689

Girl Scouts of Troop 689 started the meeting with the flag ceremony and Brownie fly-up. Seven girls from Brownie Troop 145 are now juniors of Troop 689. Next we had our court of awards. Later refreshments were served while the mothers visited. We had fun on our camp trip last week-end. Don't forget our family picnic June 6 at 6:30.

Teresa Hoffman, scribe.

UFO Documentary Crew Films Area

The Sandler Tape & Film Co., with their representative, Charles Casey, director, were in Dexter on Sunday, June 2 filming the area as part of an independent research study on UFO's.

The project is part of the study of Prof. Allan Hynek, of Northwestern University, who headed a similar study several years ago when UFO's were sighted on the Mannors farm on Fleming Rd.

Tennis Court Policy Review

The proverbial only game in town as far as Chelsea is concerned is apparently occurring on the village's tennis courts.

"Chelsea tennis courts are proving to be such a popular attraction," Tennis Commission Chairman Ann Schaffner said Tuesday, "that the Tennis Commission feels a review of the Commission's policy for reserving courts would be beneficial."

Each court now has a board at its end, Mrs. Schaffner explained, on which players should hang their racquet for the next available odd (3, 5, 7 p.m. etc.) or even (2, 4, 6 p.m.) hour.

As an example, a player who arrives at the courts at 5:45 should hang his racquet on the even hour, and at 6 p.m. the court is his. The player should go to the court at 6 p.m. and as soon as the players complete the game (not set) the player should take the court.

This player has the court until 7 p.m. If no one has racquetted the court in the meantime, this player may continue playing.

Changes are always made on the hour. Players who are racquetted are asked not to request to finish the set, because they are taking the time of people who are waiting, who will be expected to leave at the end of the next hour.

To protect blankets in the sick-room and pamper the patient, spread a pretty covering over the lap and under the food tray. For this, just pink the edges of a square yard of soft plastic—or hem a length of washable cloth, perhaps adding a lace trim. Either cover will catch foods spills and is easily sponged off or washed with soap or detergent suds.



AMERICA AND ME ESSAYISTS display their certificates awarded for placing in the top three in Beach Middle school's version of the state-wide contest. From left, are Principal Alan Conklin, who holds the plaque presented to the school by Farm Bureau Insurance Group, contest sponsor; Jeff Kiel, first-place winner; Diane Ottomann, second place, and Kathy Norris, third place.

'America & Me' Essay Contest Won By J. Kiel

Beach Middle school's "America and Me" essay winner, whose entry has now been entered in state-wide competition for the top award in the contest for 8th graders, is Jeff Kiel, 6000 Stoffer Rd.

Jeff received a personalized honor certificate, presented by Dave Rowe local representative of the Farm Bureau Insurance Group, sponsor of the essay contest, on Tuesday, as did the second and third-place winners, Diane Ottomann, 12719 Waterloo Rd., and Kathy Norris, 17036 Old US-12. Jeff also will be honored by a plaque bearing his name, which will be presented by Beach school by Farm Bureau Insurance Group.

Jeff's essay, entitled "The Problems of America," is now under consideration along with other 8th grade entries from across the state for the big prize in the contest, a fully expense-paid four-day, three-night trip to Washington, D.C. for the winning essayist, parents, and teacher.

Although attempting to tie "The Problems of America" into one coherent essay sounds like a big task for an 8th grader, Jeff touches on kidnapping, pollution, busing, the energy crisis and the Alaskan pipeline, the energy crisis and the American waste ethic, the cost of living, and population control in his concise three pages. He ends with

an optimistic comment that "I think the people of America should live under the law of the land and if we try to solve the problems, we will have a better America."

The America and Me 8th grade essay contest developed from a Lansing area competition into the present state-wide program. The topic "What Does America Mean to Me" is designed to encourage youth to seriously consider the heritage and future of America.

Farm Bureau Insurance Group in 1973 received the George Washington Honor Medal Award from Freedom's Foundation at Valley Forge for the sixth consecutive year for its sponsorship of the program.

Michigan is third nationally in wine production, fourth with its crop of grapes.

LOSE UGLY FAT OR PAY NOTHING

Start losing weight today OR MONEY BACK. MONADEX is a tiny tablet that will help curb your desire for excess food. Eat less-weigh less. Contains no dangerous drugs and will not make you nervous. No strenuous exercise. Change your life... start today. MONADEX costs \$3.00 for a 20 day supply and \$5.00 for twice the amount. Lose ugly fat or your money will be refunded with no questions asked by:

CHELSEA DRUG STORE
Chelsea - Mail Orders Filled

Cub Scouts...

PACK 455 met May 29 at South Elementary school. The opening flag ceremony was by the 1973-74 Webelos.

Webelo awards were presented by Den Chief Bob Burgess. The out-door award went to R. Klink, L. Durgan, P. Hoffman, M. Wilson, M. Stauch, T. Roy.

Six Webelos crossed the bridge from Cub Scouts into Boy Scouts and received their Boy Scout neckerchiefs. Otis Titus, Webelos den leader, presented the Webelos with copper arrows that show each of the awards the boys received as Cub Scouts.

Scout-O-Rama patches were awarded to S. Hughes, S. Luckhardt, M. Closson, A. Fletcher, J. Banks, M. Cox, R. Friday, M. Wilson, M. Stauch, P. Hoffman, T. Roy, J. Hoffman, R. Eder, J. Scott, R. Klink.

Wolf badges were awarded to M. Cox, R. Robeson. Silver arrows went to M. Closson, R. Krichbaum, S. Hughes, J. Banks.

The following boys were welcomed into the Webelos den: D. Bradshaw, S. Hughes, R. Miller, J. Banks, M. Closson, R. Eder.

Pentathlon Elimination for Pack 455 will be June 11, at 6:30 at the High School football field. Summer Olympics will be June 22 at Camp Munhake.

July 6 the pack will go to a Tiger baseball game.

Pack 455 family picnic will be held at 5:45, Aug. 15, at Pierce Park.

Women's Baseball Practice Scheduled Twice Weekly

Chelsea's women's baseball practice, open to all interested women, is held at Beach Middle school every Tuesday and Thursday, at 8:30 p.m.

POLE BUILDING CONTRACTORS

Producers of Better Built Pole Buildings

THE STANDARD OF EXCELLENCE IN POLE STRUCTURES

- ★ We have many designs to choose from.
- ★ We will blueprint a building to your exact specifications at no charge.
- ★ Prompt quotes with scale drawings.
- ★ Building "specials" is our standard form of pricing on all structures.
- ★ Immediate construction dates at all times.

For A Free Estimate Call (517) 589-8600, Anytime

Summer Tennis Pre-Registration

Name _____

Address _____ Phone _____

Category:

☐ Adult (over 18) 6 p.m. Thursday

☐ Junior (13-17) 3 p.m. Tuesday

☐ Child (5-9) 9 a.m. M-W-F

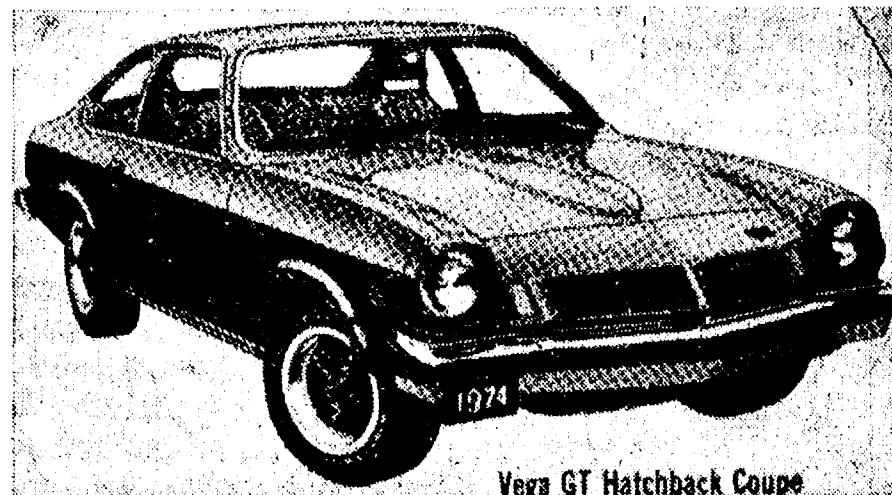
☐ Child (10-12) 10 a.m. M-W-F

Skill Level:

☐ Beginner ☐ Intermediate

Return completed form to:
T. SCHREINER, 800 BOOK, CHELSEA 48118

CONGRATULATIONS CHELSEA GRADUATES



Vega GT Hatchback Coupe



Nova Custom Coupe

For the graduate who wants good, economical transportation, we recommend the low-priced, dependable VEGA or NOVA.

... PLUS ...

We have a good selection of low-priced OK Used Cars. All our used cars have been reconditioned and safety-checked for dependable driving.

LLOYD BRIDGES CHEVROLET

For Quality and Service at Low Prices!

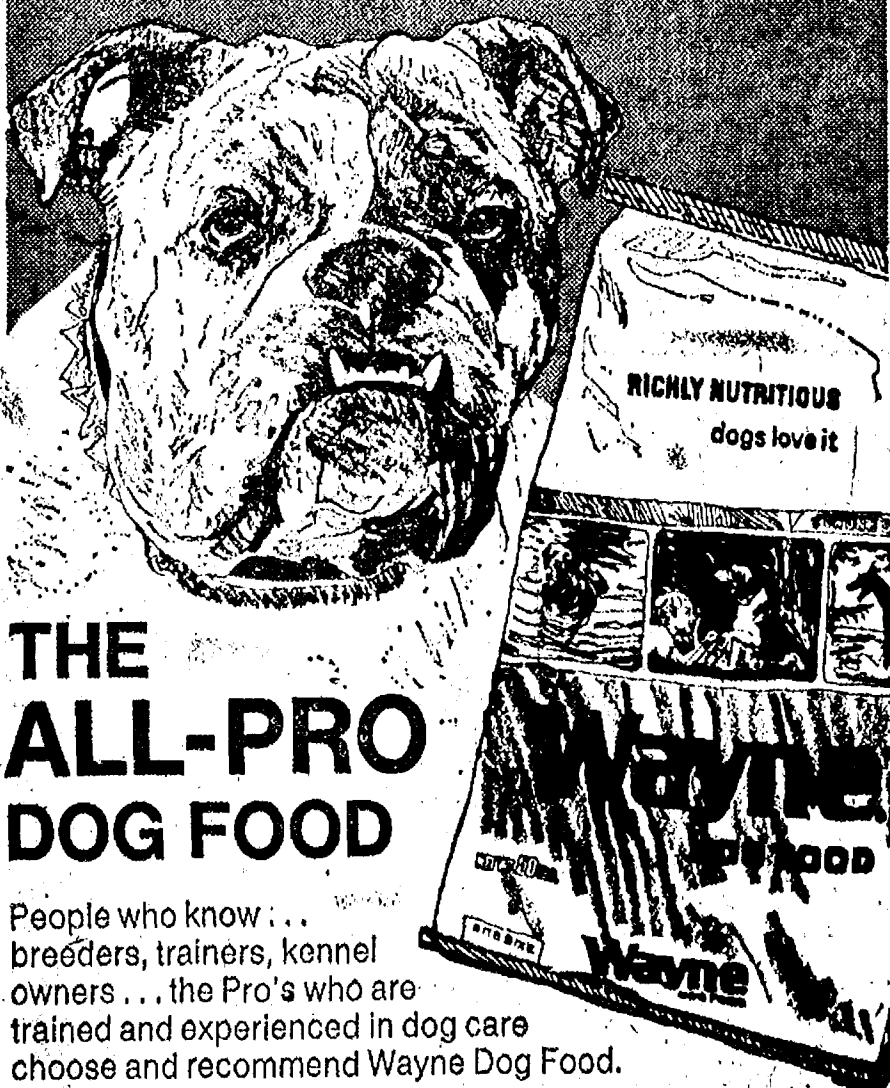
SALES HOURS:

Daily 8 a.m. to 6 p.m.
Saturday 8 a.m. to 1 p.m.
Monday Evening til 8:30 p.m.

475-1373

405 N. MAIN - CHELSEA

Wayne



THE ALL-PRO DOG FOOD

People who know... breeders, trainers, kennel owners... the Pro's who are trained and experienced in dog care choose and recommend Wayne Dog Food.

Why? Because they know Wayne's is a nutritionally balanced dry dog food that helps build and maintain strong, healthy dogs. A total meal in itself, it contains all known nutrients necessary for complete dog nutrition. Ask for the professionals' choice... Wayne Dog Food.

Now Available — Ground Corn Cobs

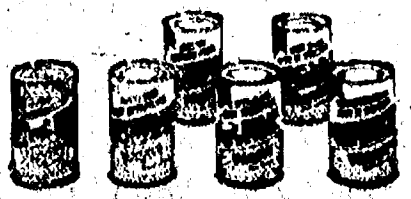
McCalla Feed Service

PHONE 475-8153

12875 OLD US-12

CHELSEA

Also from Wayne
Ask us about Wayne's
complete canned dog food line.
A nutritious and
convenient daily ration.



COMPLETE HOME REMODELING

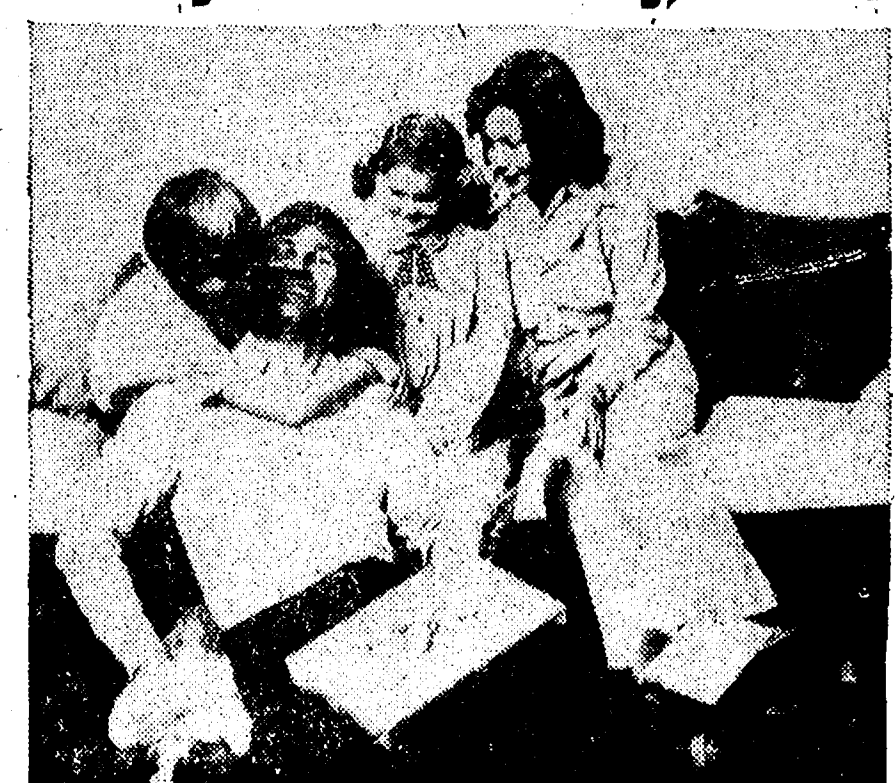
FREE ESTIMATES DORMERS

ALUMINUM SIDING
EAVESTROUGHS
ADDITIONAL
AWNINGS

ROOFING
KITCHENS
REC ROOMS
GARAGES

CAMELOT CONSTRUCTION 475-9209
14034 N. Territorial

Hooray! It's Father's Day, June 16



Show him you care... Give him VAN HEUSEN® SHIRTS and SPORTSWEAR

Also a Wide Selection of

- ★ MUNSINGWEAR GRAND SLAM KNITS
- ★ ROD LAYER TENNIS WEAR GIFT SETS
- ★ JANTZEN SHIRTS & SWIM WEAR
- ★ PURITAN BAN LONS

STRIETER'S MEN'S WEAR

1914 - Celebrating Our 60th Year - 1974

Polly's MASTER MARKETS

1101 M52 CHELSEA	201 PARK VANDERCOOK LK.	1621 Spring Arbor Rd. JACKSON
960 N. WEST AVE. JACKSON	115 W. PROSPECT ST. JACKSON	1809 E. MICH. AVE. JACKSON

MEAT BUYS



U.S.D.A. CHOICE BLADE CUT

CHUCK STEAK

69^c

LB.

U.S.D.A. CHOICE BONELESS

CHUCK ROAST

99^c

LB.



LEAN MEATY

SPARE RIBS

3 TO 5 LB. AVG.

69^c

LB.



FRESH GROUND ALL BEEF

HAMBURG 69^c

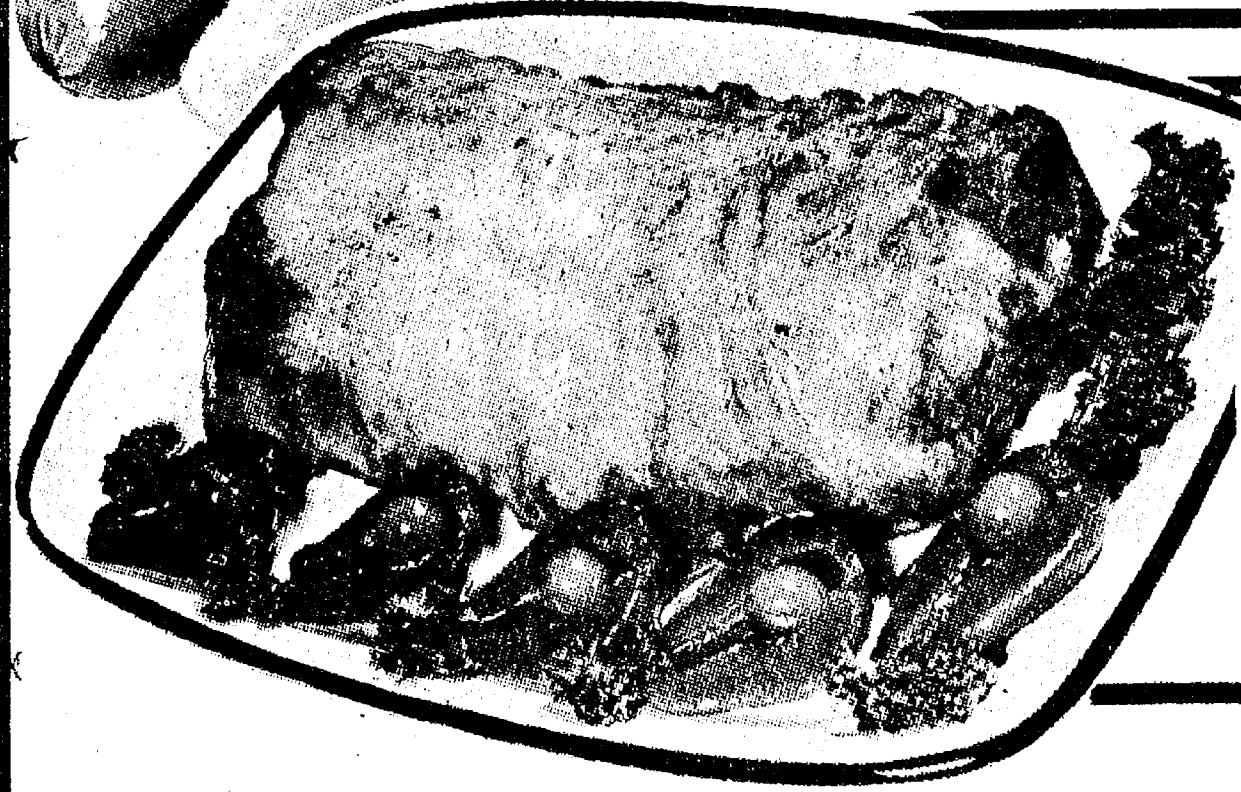
LB.



SWIFTS PREMIUM ALL MEAT

FRANKS 69^c

LB.



LEAN MEATY WHOLE or HALF

PORK LOINS

14 to 17 LB. AVERAGE

69^c

LB.

SLICED FREE!

SWIFTS EVERSWET SLICED

BACON

69^c

LB.

FARMER PEET'S FINEST BONELESS

BONANZA HAM

1 09

LB.

WHOLE OR HALF

WATER ADDED FOR CURING

MEAT BUYS

GOURMET SEAFOOD SPECIALS!

PETITE LOBSTER TAILS	LARGE FANCY SHRIMP
FANCY BAY SCALLOPS	FANCY JUMBO FROG LEGS

\$2 99

POUND

DELI TREATS!

- LEON'S POTATO SALAD
- BAKED BEANS
- MACARONI SALAD
- COLE SLAW

Your Choice

59^c

LB.

ECKRICH BULK RING BOLOGNA lb. 99^c
ECKRICH BULK ROASTED or POLISH SAUSAGE lb. \$1 29

ECKRICH LUNCH MEAT SPECIALS!

10-OZ. PKG. SMOK-Y-LINKS 79^c
8-OZ. PKG. HONEY, BARB-Q & PRESSED LUNCHEON LOAF 79^c
ALL MEAT FUN FRANKS lb. 89^c
ALL BEEF 12-OZ. PKG. SMORGAS PAC \$1 29

HYGRADES ALL MEAT CHUNK

BOLOGNA lb. 59^c

HYGRADES CENTER CUT SMOKED WATER ADDED FOR CURING

RIB PORK CHOPS lb. \$1 09


HYGRADES CENTER CUT SMOKED LOIN PORK CHOPS lb. \$1 19

U.S.D.A. Gov'T. INSPECTED FRESH DRESSED 1/4'd FRYER PARTS lb. 45^c

HERRUDS BULK CHUNK BRAUNSWEIGER lb. 48^c

FARMER PEET'S PURE PORK V.C. SAUSAGE PATTIES lb. 66^c

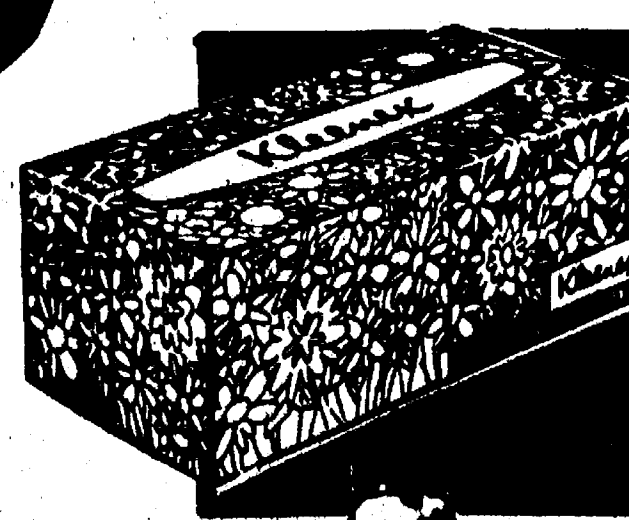
FARMER PEET'S MANY VARIETIES OF SLICED LUNCH MEATS lb. 99^c



Polly's MASTER MARKETS

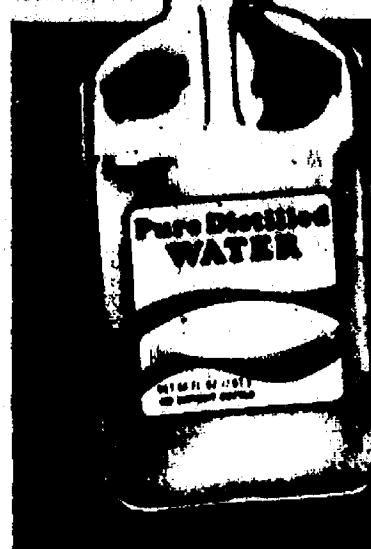
1101 M52 CHLSEA	201 PARK VANDERCOOK LK	1621 Spring Arbor Rd. JACKSON
960 N. WEST AVE. JACKSON	115 W. PROSPECT ST. JACKSON	1809 E. MICH. AVE. JACKSON

YOU GET WHAT QUALITY FOODS AT EVERYDAY



200 COUNT BOX
KLEENEX
FACIAL TISSUES

3 BOXES FOR **\$1⁰⁰**



PURITY GALLON JUG of SPRING or
DISTILLED WATER

39^c



CONTADINA 8 OZ. CAN
TOMATO SAUCE

10^c



Pillsbury's BEST FLOUR
idea recipes inside!!!



Mazola Margarine



Bounty TOWELS



NESCAFE
coffee

VALUABLE COUPON
WITH \$5.00 PURCHASE
PILLSBURY FLOUR
79^c
SAVE 10^c
LT 1 EXP. 6-9-74

VALUABLE COUPON
WITH \$5.00 PURCHASE
MAZOLA MARGARINE
2 FOR 99^c
SAVE 38^c
LT 2 EXP. 6-9-74

VALUABLE COUPON
WITH \$5.00 PURCHASE
BOUNTY TOWELS
JUMBO ROLL 3 FOR \$1.00
SAVE 41^c
LT 3 EXP. 6-9-74

VALUABLE COUPON
WITH \$5.00 PURCHASE
GLAD WRAP
200 FT. BOX 49^c
SAVE 10^c
LT 1 EXP. 6-9-74

VALUABLE COUPON
WITH \$5.00 PURCHASE
NESCAFE INSTANT COFFEE
10 OZ. \$1.79
SAVE 20^c
LT 1 EXP. 6-9-74

VALUABLE COUPON
FREE! 64 OZ. BOTTLE OF COKE
with PURCHASE OF COCA-COLA TRAY
SAVE 69^c
LT 1 EXP. 6-9-74

46 OZ. CAN
HAWAIIAN PUNCH 39^c
48 OZ.
SCOTLAD SALAD OIL \$1.49
16 OZ. HEARTLAND
NATURAL CEREAL 59^c
MAMA 12 OZ.
ONYX CREME COOKIES 59^c

3 LB. CAN
FLUFFO SHORTENING \$1.39
32 OZ.
MUSSELMAN APPLE JUICE 53^c
12 1/2 OZ. SHUR-GOOD
NUT CREME COOKIES 69^c
32 OZ.
VLASIC SWEET RELISH 73^c



Coca-Cola
64 Oz. Size

FREE!
64 OZ. BOTTLE of COKE
with coupon & purchase of each tray

Recapture the 20's
on trays for *Coca-Cola*

1.59 EACH

Frozen Food Specials!

QUEEN of SCOT 10 OZ.
CUT or MIXED VEGETABLES
5 FOR **\$1⁰⁰**

WHITE BREAD \$1.29
TOWN SQUARE 26 OZ.
CHOCOLATE CREAM PIE 79^c
TOWN SQUARE 26 OZ.
BANANA CREAM PIE ... 79^c

ORE-IDA 16 OZ. BOX
TATER TOTS 29^c
ORE-IDA 16 OZ. BOX
GOLDEN FRIES 29^c
NICKERSON 1 LB.
OCEAN PERCH 89^c

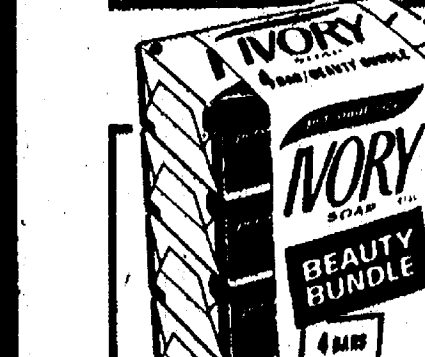
Fresh Bakery Treats!

YEAST RAISED
GLAZED DONUTS
6 FOR **49^c**


CHOCOLATE CHIP
COOKIES 49^c DOZEN

BAKING POWDER
BISCUITS 6 FOR 39^c


1 LB. LOAF
ITALIAN BREAD 59^c




4 BAR PERSONAL SIZE
IVORY SOAP 39^c




BORDEN'S 1/2 GAL.
ICE MILK 59^c



ARTIFICIALLY FLAVORED
Vanilla
REDDI WHIP 48^c



TUNA & CHICKEN or LIVER
KAL-KAN CAT FOOD 6 6 OZ. CANS FOR \$1⁰⁰



SUNSWET 32 OZ.
PRUNE JUICE 58^c

VLASIC 32 OZ.
KOSHER CHIPS 59^c

VLASIC 32 OZ.
KOSHER DILLS 69^c

STARKIST 6.5 OZ. CHUNK
LIGHT TUNA 49^c

The Finest **FRUITS and VEGETABLES**

YOUR CHOICE!
• GREEN PEPPERS
• RADISHES
• GREEN ONIONS
• CUCUMBERS
2 FOR **29^c**

CHIQUITA GOLDEN RIPE
BANANAS 15^c LB

GEORGIA'S FINEST
PEACHES 49^c EA

FIRM FRESH
CABBAGE 12^c LB

YOU PAY FOR... at Polly's!!

LOW PRICES... CHECK & COMPARE!



20¢ OFF 32-OZ.

IVORY
LIQUID

59¢



BAKERS 12-OZ.

CHOCOLATE
CHIPS

59¢



25¢ OFF 84-OZ.

CHEER
DETERGENT

\$1.49

3 LB.
SCOT LAD
SHORTENING

\$1.29

8-OZ. WEIGHT WATCHERS
ASSORTED
BROTHS

4 FOR **\$1**

5-LB. BAG SKIPPY DOG
DINNER
NUGGETS

99¢

24-OZ. VLASIC
SWEET BUTTER
CHIPS

69¢

1 LB. LOAF HOLSUM

COUNTRY STYLE
BREAD

47¢

13½-OZ. CINNAMON-APPLE &

RASPBERRY

HOSTESS-O's

69¢

18 PAK ASST. HERSHEY

JUNIOR

CANDY BARS

79¢

12-OZ. BILTMORE

LUNCHEON

LOAF

49¢



Polly's famous
**BROASTED
CHICKEN**

9 piece
bucket
\$1.79

12 piece
bucket
\$2.95

21 piece
bucket
\$4.95

CALL 787-5228 for
TAKE OUT ORDERS

SPRING ARBOR
STORE ONLY

**Farmer
Peet's**

Little Red Barn!

FEATURING:

HOT
DOGS EA. **15¢**

GLASS OF
VERNORS **5¢**

APPEARING AT:

POLLY'S in CHELSEA

THURS. JUNE 6th THRU SAT. JUNE 8th

from NOON 'til 6:30 P.M.

Polly's
Snack Bar
SPECIALS

LOCATED AT
SPRING ARBOR RD. &
N. WEST AVE. STORES!

TUES.
JUNE 4th

FRANKS & KRAUT

99¢

WED.
JUNE 5th

BEEF & NOODLES

99¢

THURS.
JUNE 6th

BROASTED CHICKEN

99¢

FRI.
JUNE 7th

FISH & CHIPS

99¢

SAT.
JUNE 8th

CONEY ISLAND

49¢ ea.

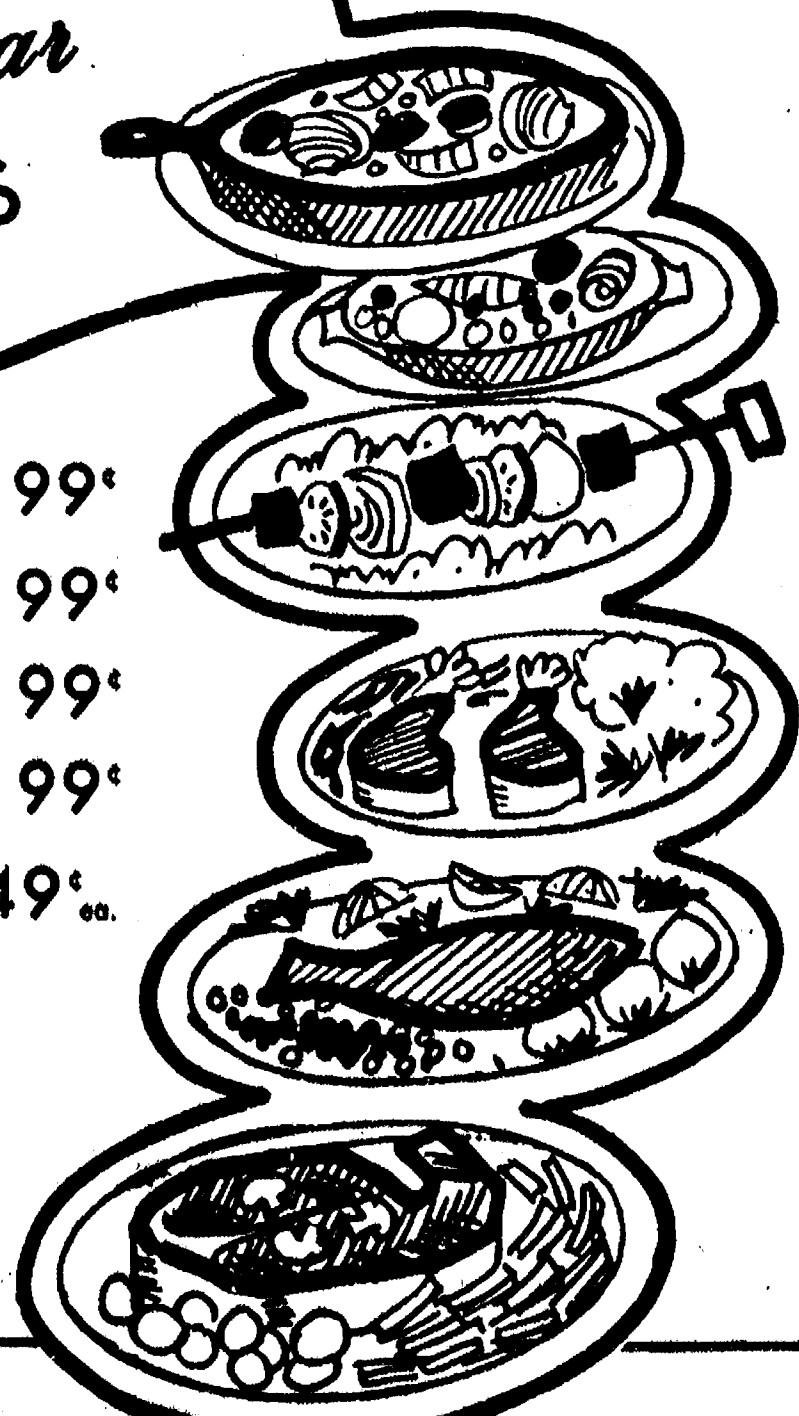
DAILY
BREAKFAST
SPECIAL

• ONE EGG
• SAKE
• BACON
• COFFEE
59¢

FRENCH TOAST
& COFFEE

89¢

SNACK BARS
OPEN AT
7 A.M.



**DON'T MISS
THIS OFFER!**

FEATURED "PIECE-A-WEEK"

6-4-74 THROUGH 6-9-74



ONLY
CUP & SAUCER 59¢ SET

with a \$3.00 purchase

NO COUPON • NO LIMIT ON THESE ITEMS

WEEKLY FEATURE PIECES

This Coupon Worth 50¢

TOWARD THE
PURCHASE OF

**2 SOUPS &
2 SALADS**

\$1.99 PRICE

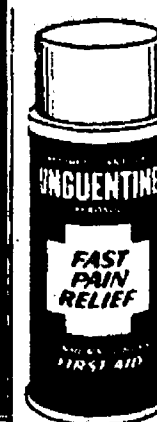
50¢ COUPON
VALUE

\$1.49 WITH
COUPON

VALUABLE COUPON

SPECIAL
FREE
OFFER
WITH
THIS
COUPON

*Health &
Beauty Aids!*



UNGUENTINE
Aerosol

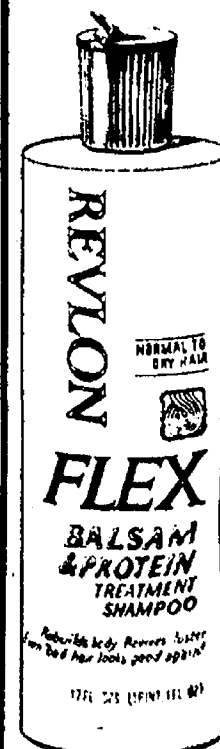
5 oz. Can
\$1.89 Value

\$1.37

ALL YOUR SUMMER
TANNING & BURN LOTIONS
AT LOW, LOW POLLY'S PRICES!

POND'S TALC

Reg., Lemon, Peach
6½ oz. Can **49¢** 79¢ Value



REVLON

Milk Plus 6 Shampoo

Normal, Tinted & Bleach

8 ounce bottle

\$2.25 Value **\$1.39**

Flex Balsam Shampoo

Normal & Oily

17 ounces

\$2.00 Value **\$1.39**

Flex Hair Net

13 oz. Aero

\$2.50 Value **\$1.39**

WE'VE GOT
Flicker
NEW LADIES' SHAVES
THAT CUTS HAIR...
NOT SKIN

\$1.49 Value

\$1.09

Cepacol®
Mouthwash

20 oz. Bottle
\$1.67 Value

99¢



BUFFERIN
TABLETS

100
ct.

\$1.09

\$1.75
Value

You'll be drier

...We're

SURE

ANTI-PERSPIRANT

9 oz. Scent or Unscent

\$1.75 Value

\$1.09

VASELINE

9 oz. Intensive Care

Baby Powder

59¢

7½ oz. Petroleum Jelly

49¢



Pkg.
of 7

88¢

\$1.29
Value

Tame CREME
RINSE
WITH

8 oz. Bottle

\$1.25 Value

69¢

16 oz. Bottle

\$1.89 Value

\$1.43

NEW *Tame*

Balsam & Body

8 oz. Bottle

\$1.39 Value

79¢



**SUDDEN®
BEAUTY**

Regular or

Super Hold

12 oz. Aero

85¢ Value

59¢





Polly's MASTER MARKETS

1101 M52
CHELSEA

201 PARK
VANDERCOOK LK.

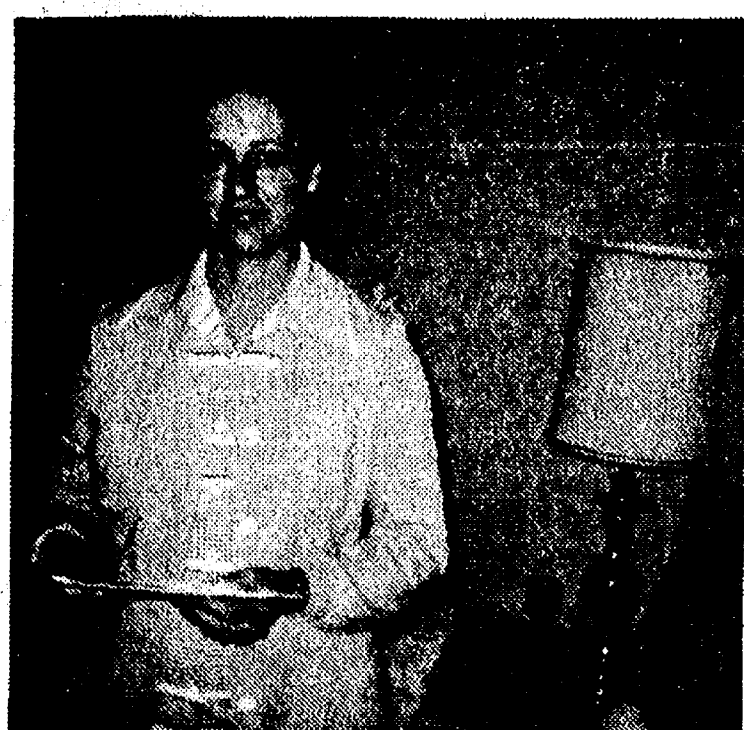
1621
Spring Arbor Rd.
JACKSON

960
N. WEST AVE.
JACKSON

115
W. PROSPECT ST.
JACKSON

809
E. MICH. AVE.
JACKSON

GET WHAT YOU PAY FOR!!



MRS. BOBBIE RHYMER

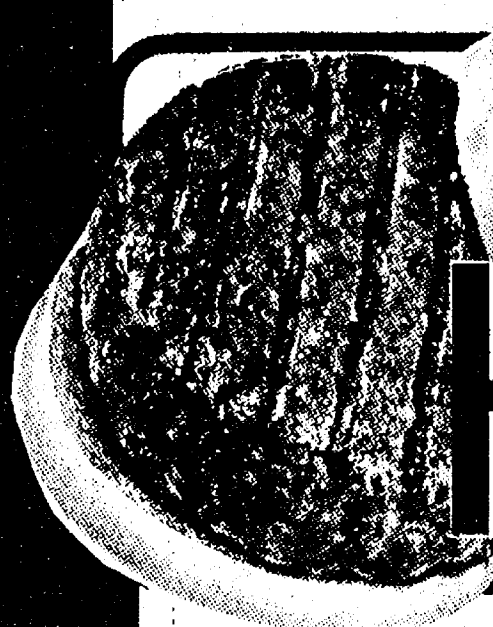
CONGRATULATIONS!

This attractive young lady is smiling because she has just won our grand prize of \$500⁰⁰ worth of free groceries. We would like to thank Mrs. Rhymer and all our other customers who made our 40th Anniversary a huge success! If a smile does as much for you as it does for Mrs. Rhymer we hope we can make all our customers smile thru our daily operations . . . because smiling customers makes all our jobs just a little bit easier!

MORE BIG WINNERS . . .

\$50.00	Jean Kinrey
\$50.00	G. A. Toombs
\$50.00	W. J. Mosley
\$50.00	H. C. Talbott
\$25.00	John T. Hession
\$25.00	Lina Duerr
\$25.00	Mrs. Don Calbert
\$25.00	E. Solomon
\$10.00	Wayne Causie
\$10.00	Leo Steers
\$10.00	Marie Simon
\$10.00	William Ezell
\$10.00	Margaret Petroff
\$5.00	Wanda Taraskiewicz
\$5.00	Diana Weller
\$5.00	Charlotte Inglis
\$5.00	Mrs. T. Ramsay
\$5.00	Mrs. George Males
\$5.00	Reuben Lesser
\$5.00	JoAnn Knepper
\$5.00	Evelyn Peek

WEEK AFTER WEEK, DAY AFTER DAY, POLLY'S OFFERS YOU QUALITY ITEMS FOR LESS. CHECK AND COMPARE AND YOU'LL DISCOVER AS MANY HAVE THAT WE'LL SAVE YOU MORE ON YOUR TOTAL FOOD BILL! POLLY'S IS "YOUR KIND OF PLACE"



FRESH GROUND ALL BEEF

HAMBURG 69^C

LB.

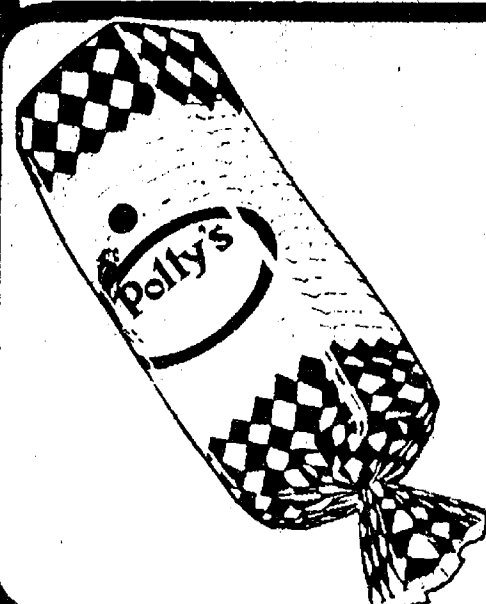


LEAN MEATY

SPARE RIBS 69^C

LB.

3 TO 5 LB. AVG.



POLLY'S QUALITY 20 OZ.

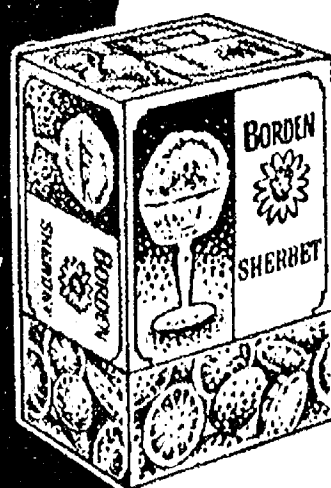
BREAD

4 LOAVES FOR \$1⁰⁰



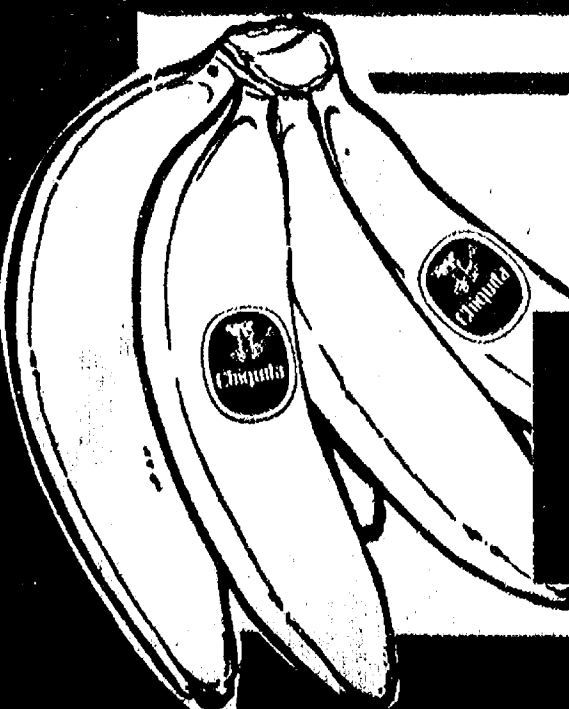
SEALTEST LIGHT N' LIVELY 12 OZ.

COTTAGE CHEESE 39^C



BORDEN'S 1/2-GALLON

SHERBERT 59^C



CHIQUITA GOLDEN

BANANAS 15^C

LB.